

School News

Education + Communication = A Better Nation

Covering the Redondo Beach Unified School District



Volume 18, Issue 134

February 2024

Redondo PTA & RBEF: Our Partners for Student Success!



With their commitment to our students,
PTA volunteers and RBEF ignite learning and create exceptional opportunities in RBUSD.



Board of Education



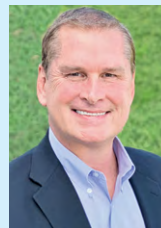
**Rachel
Silverman Nemeth**
President



**Raymur
Flinn**
Vice President



**Dan
Elder**
Presiding Officer



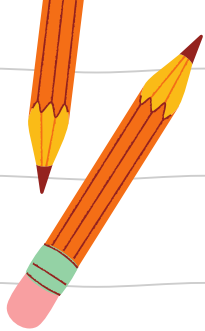
**Rolf
Strutzenberg**
Member



**Byung
Cho**
Member



**Chloe
Caywood**
Student Member



The Redondo Beach Unified School District
is excited to announce the expanded

Transitional Kindergarten Class of 2038



Incoming TK Information Day

Thursday, February 22, 2024

Time: 4:30PM - 5:30PM

Location: Jefferson Elementary School
600 Harkness Lane, Redondo Beach

We welcome all parents with a child eligible to attend TK in the 2024-25 school year. Your child must turn 5 years old between September 2, 2024 and June 2, 2025 to be eligible.

- Learn about updates to California's Universal Transitional Kindergarten.
- This event is for informational purposes only - registration will not occur.
- Please contact your neighborhood school for information on TK registration beginning on Friday, March 1st, 2024.



TULITA



Superintendent



Dr. Nicole Wesley
Superintendent

Platinum Plus Partners & Programs

Being thankful for our partnerships with the Redondo Beach Education Foundation (RBEF) and PTA is an understatement now more than ever. I recently read, "California's birth rate is at its lowest level in more than 100 years," ([cited article](#)). RBUSD is not immune to declining enrollment or the state budget's pending fiscal cliff. However, with the strong support of our school community, who supports our Ed Foundation and school

PTAs, RBUSD will continue to engage our students in platinum plus programs.

Like many parents, I am thankful my 8th grader, who loves art, has had the opportunity to experience enriching Hands on Art lessons every year since she was in 1st grade, thanks to our PTA. I have proudly framed and hung many of the final products. With the increased cost of art materials and difficulty in finding art teachers, this support is priceless! This spring, all 8th graders will visit the Museum of Tolerance, thanks to RBEF. What an amazing learning opportunity! With a strategic plan goal of enhancing kindness and inclusion, as well as knowing how much transportation has gone up, we are very fortunate that RBEF is providing this opportunity for all 8th graders. There are so many ways in which RBEF and PTA positively impact the lives of our students.



Thank you, RBEF, for providing transportation for all 8th graders to the Museum of Tolerance – another experience that promotes inclusion and kindness.



Thank you, PTA, for providing engaging art experiences to RBUSD students.

Every dollar donated and every minute volunteered is what allows RBUSD students to experience platinum plus programs. To see the harmony and partnership between RBEF and PTA is tenfold, as they both provide value-added experiences that our students would not have otherwise. Thank YOU, our school community, for supporting these partnerships and joining the journey.

Special education programs are authorized by federal and state laws.

These laws require that a free and appropriate public education shall be offered in the least restrictive environment to all students identified as disabled. Through the District's Student Study Team process and other procedures, a continuous effort is made to locate and identify individuals who might qualify for special education services.

The law also provides that parents may initiate a request to have their child assessed to determine eligibility for special education and/or related services.

This request should be in writing and submitted to:

The Office of Special Education
1401 Inglewood Ave.,
Redondo Beach, CA 90278



Pastry • Fresh Baked Bread • Espresso
Breakfast • Lunch

kirari west
Bake Shop
Dedicated Gluten Free Facility

Our entire inventory of
food and products are gluten-free.

We are committed in serving crafted pastries to
people who have gluten allergy and Celiac Disease.



www.kirariwest.com
(310) 376-5313
707 N PCH, Redondo Beach

SOUTH BAY DRIVING SCHOOL

*Proud Sponsor of Your School
for Over 29 Years!*

- Online Driver Education
- Driver's Training for Teens
- Stick Shift Lessons
- Adult Driving Lessons



Schedule Online:
SouthBayDriving.com

3614 Pacific Coast Hwy., Torrance 90505
310-791-1111

Board of Education



Dan Elder

Presiding Officer

Volunteers Making a Difference

There are many reasons why RBUSD is such an incredible place to be, but a critical piece is the support and dedication from our community. Our teachers and staff are passionate about helping y(our) students succeed and reach their full potential, but it takes a village to give our students every opportunity to thrive and that's where our volunteers come in. Our parents and community members invest their time,

energy, and dollars in our schools and our students through many different organizations but there are a few that deserve special recognition.

Our PTAs do an amazing job building school and community spirit through countless events and activities and are the first ones lined up when volunteers are needed for anything school related. The best part of PTA is how easy it is to get involved with a winning team of parents and caregivers. Whether it's signing up for a shift at an event, being a room parent, or serving on a PTA Board, there's always something for your comfort level and availability. Our PTAs are the secret glue that holds our school communities together and helps take them from good to great!

Redondo Beach Educational Foundation raises badly needed funds for programs like PE, music/band, Esports, robotics, field trips, intramural sports, and teacher grants. So many of the activities our students participate in rely on our RBEF volunteers and the generosity of our parents and businesses in our community. Even small donations add up to make these enriching programs available in our schools.

Beach Cities Health District volunteers and staff help keep our students and staff healthy nutritionally, physically, and mentally. Resources like allcove are invaluable to ensuring positive outcomes and we're grateful for all our partner organizations and volunteers!

Board of Education Meeting Dates

2024		
February 13	March 26	May 28
February 27	April 30*	June 11
March 12	May 14	June 25

*** Due to holiday schedule, only one Regular Board April. (April 30 Swearing-In and Organizational Special Meeting Only)**

EVERY CHILD PLAYS • USYVL.ORG



Torrance at Sur La Brea Park

Thursday, April 11, 2024 - Saturday, June 1, 2024

Thursdays: 6:00 PM - 7:00 PM

& Saturdays: 9:00 AM - 10:00 AM

Torrance at Towers Elementary School

Thursday, April 11, 2024 - Saturday, June 1, 2024

Thursdays: 6:00 PM - 7:00 PM

& Saturdays: 9:00 AM - 10:00 AM



Boys and Girls ages 7-15

Registration price includes a t-shirt



Plan Ahead & Save

Early: \$150 due by 03/01/24*

*with discount code 25SP24

Late: \$200 until 04/01/24

register today!
usyvl.org

UNITED STATES YOUTH



VOLLEYBALL LEAGUE

USYVL Non-Profit #77-0460698

©USYVL All Rights Reserved

Beach Cities Health District

514 N. Prospect Ave., Redondo Beach, CA 90277 • 310/374-3426 • www.bchd.org



Emory Chen, MSW, MA Ed
Director
Youth Services

Addressing Trends, Impacting Youth Mental Health and Substance Use

Beach Cities Health District (BCHD) continues to direct awareness efforts towards our health priorities of mental health and substance use through the engagement of key stakeholders such as local youth, families and Redondo Beach Unified School District (RBUSD).

A group of select Youth Advisory Council members from our Beach Cities Partnership for Youth Coalition created

the #MindfulMediaMovement campaign in response to the Surgeon General's health advisory on social media and youth mental health. This peer-to-peer education content focused on: 1) How Social Media Can Affect Mental Health, 2) Physical Impacts of Excessive Screen Time, 3) Preserving One's Digital Footprint, 4) Safety with Social Media and 5) Self-Care and Social Media Breaks. The campaign was featured on BCHD social media platforms in December with the hope to inspire their peers to adopt healthy practices as well as bring awareness to the adults in their lives, ranging from parents who model behavior and set guidelines in the home to elected officials who influence policy.

This youth-driven effort was paired with a newly created "Talk About It" tip sheet focused on digital

citizenship produced by the Coalition's Health and Wellness Parent Liaison workgroup. The tip sheet was shared with families through the school district and PTA Council and made available at community events. Tips are designed for parents by parents, providing developmentally and age-appropriate suggestions on having conversations with youth on the responsible use of computers, the internet and digital devices. Visit bchd.org/talk for more information.

BCHD is also expanding our intervention efforts towards addressing the opioid overdose crisis with support from the California Department of Health Care Services' Naloxone Distribution Project. Since October 2023, Youth Advisory Council Students, parents and staff have received naloxone kits and training. Kits include two doses of the opioid antagonist medication and an instructional pamphlet with a QR code to the "Administering Naloxone" video. More than 600 naloxone kits have been provided to the community. This resource is also available at allcove Beach Cities as a designated distribution site. For more information, visit bchd.org/opioids.



allcove



Scan to register for events

feb 2024 events calendar

08 life after covid-19 and the impact it's had on you
22 Thursday, Feb. 8
feb Thursday, Feb. 22
@ 5 – 6:30 p.m.

family services only
13 virtual families connected
feb parent chat
Tuesday, Feb. 13
@ 10 a.m.

16 open performance night
feb Friday, Feb. 16
@ 5 – 7 p.m.

09 clothing swap
Friday, Feb. 9
22 Thursday, Feb. 22
feb @ 4:30 – 6 p.m.

family services only
14 family support group
feb Wednesday, Feb. 14
@ 5:30 – 7 p.m.

22 job and volunteer search workshop*
feb Thursday, Feb. 22
@ 4:30 – 6 p.m.

13 valentines craft night
feb Tuesday, Feb. 13
@ 4:30 – 5:30 p.m.

15 resume building workshop for high school & college students*
feb Thursday, Feb. 15
@ 4:30 – 6 p.m.

28 cycles and smoothies
feb Wednesday, Feb. 28
@ 4:30 – 6 p.m.

*These sessions complement each other. It is desirable, but not required to attend both sessions.

Visit allcove.org/beach-cities for more information.

current hours

Tuesday - Friday: 1 – 7 p.m. • Saturday 10 a.m. – 2 p.m.
(except during certain holidays)



Kay Coop
Founder/Publisher



Netragrednik

School News

Education + Communication = A Better Nation

www.schoolnewsrollcall.com

Covering the

REDONDO BEACH UNIFIED SCHOOL DISTRICT

FOUNDER/PUBLISHER: Kay Coop

562/493-3193 • schoolnewsrollcall@gmail.com

ADVERTISING SALES: 562/493-3193

CONTENT COORDINATOR: Barbra Longiny

GRAPHIC DESIGNER/PRODUCTION:

Emily Ung and Mie Kawamura

COPY EDITORS: Kate Karp, Anna Zappia

SOCIAL MEDIA: Nancy Lueder

Netragrednik by Neta Madison



@SchoolNewsRC



SchoolNewsRollCall



SchoolNewsRollCall



SCHOOL NEWS ROLL CALL, LLC

P.O. Box 728, Seal Beach, CA 90740

562/493-3193

www.schoolnewsrollcall.com

Copyright © 2006, School News Roll Call, LLC

Reproduction in whole or in part without written

permission is strictly prohibited unless otherwise stated.

Opinions expressed by contributing writers and guest

columnists are their views and not necessarily those of

School News Roll Call. This publication is privately

owned and the right is reserved to select and edit content.

The Redondo Beach Unified School District does not

endorse the advertisers in this publication.

Time marches on...this is our 18th year publishing the RBUSD *School News*. Technology has been one of the biggest changes in education and now AI is taking center stage. I have to say when interactive whiteboards replaced the traditional chalkboards, I was amazed (at that time my VCR was still blinking). Therefore, I may be the last to understand AI. I'll look forward to reading the future articles in *School News* about AI in the classroom.

In this issue you will read articles about the importance of the Redondo Beach Educational Foundation, the PTA, Beach Cities Health District, parents and community partnerships for the success of the students.

As always thank you for continuing to include *School News* among your reading choices. We are only a click away when you have time to read on your phone or computer.

Our next issue is May 1.



CALLING ALL 3RD-12TH GRADE STUDENTS

ART CONTEST



Artwork by Rue Hawkins - Birney Elementary (2023)

INSPIRE YOUR COMMUNITY TO ADOPT WATER CONSERVATION AS WAY OF LIFE THROUGH THE "BEING WATER WISE IS..." ART CONTEST

WIN AN IPAD PRIZE!

ENTRY DEADLINE:

5:00PM, MARCH 15, 2024

FOR CONTEST DETAILS, VISIT WESTBASIN.ORG/ARTCONTEST

Board of Directors

Harold C. Williams
Division I

Gloria D. Gray
Division II

Desi Alvarez
Division III

Scott Houston
Division IV

Donald L. Dear
Division V

Redondo Beach Council PTA

1401 Inglewood Ave., Redondo Beach, CA 90278 • www.rbusd.org



Sondi Kroeger-Foley
President

Stronger Together

On February 17th PTA will be celebrating over 125 years of working on behalf of children and families. What a wonderful legacy to be a part of!

As the president of Redondo Beach Council PTA, I have the privilege of meeting with council presidents from all over Southern California on a monthly basis, and I always walk away from those meetings with the exact same feeling: I am so grateful that I live in Redondo Beach and my children are part of RBUSD.

One of the things that makes our wonderful school district so unique, is our community partnerships. Redondo Beach Education Foundation and Beach Cities Health District are two examples of organizations that partner with PTA to make our district stronger.



Because RBEF focuses on district-wide fundraising and providing many grade level programs, and BCHD provides resources to promote health and wellness, PTA is able to focus on our primary mission to advocate for the education, health, safety, and well-being of all children, and to promote and build family engagement at each of our school sites.

These community partners, our School Board, staff, teachers, and administrators, along with our 8,000+ PTA members work hand-in-hand to enhance the lives of our students every day, so that we are able to carry on with the work started by our founders Alice McLellan Birney, Phoebe Apperson Hearst, and Selena Sloan Butler.



200+
degree & certificate
programs to explore

At **El Camino**, you'll find a community that believes in you and your power to succeed. Learn more at www.elcamino.edu/start.



Don't delay. **Start today.**

El Camino College 

Redondo Beach Educational Foundation

409 N. P.C.H., #310, Redondo Beach, CA 90277 • 310/954-2004 • www.rbef.org



Doris Donlou-Richmond
President

New Year – New Opportunities

With the start of the new year, I get so excited thinking about the possibilities and opportunities ahead to make a difference in our students' lives. The most common

question I am asked is how RBEF decides what we will fund from year to year. The simple answer to that is, WE DON'T! We leave that to the professional educators at RBUSD.

Each year, the Redondo Beach Unified School District meets with all of our principals to assess the needs of each school level for the following year – Elementary, Middle Schools and the High School. Once those needs are established, they look to see what their annual budget will cover. Any items that cannot be covered by the RBUSD budget ends up coming



RBEF and PTA at the RBUSD Welcome Back School Rally

to RBEF at the beginning of the calendar year as part of their annual ask. If RBEF can afford to fund the entire ask, we happily do, but if the ask is more than we can fund, the items are then prioritized by RBUSD and we fund in order of that priority up to where we are able.

This is why participation in our annual Investor Drive, events and business partnerships are so important. The more funds we raise as a community, the more opportunities we can fund for all of our students across the district!

A special thank you to the people who make all of this possible — our WONDERFUL VOLUNTEERS! Our incredible Advocates, our dedicated Board Members and our amazing PTA's donate their time all year long for the betterment of our students.

Ever thought about how YOU can get involved with the Redondo Beach Educational Foundation? Check us out at www.RBEF.org.

Happy New Year from our RBEF family to yours!

Peaceland Music & Repair GUITAR LESSONS

Guitar, Piano, Voice, Violin, Bass, Drums

Also: Ukulele, Banjo, Mandolin



James Musser

Nominated Best LA Band '96
Best Guitar '97 LA Music Awards

All Ages, Levels & Styles
Days, Evening & Weekends

(310) 650-4021

peaceland@peacelandmusic.com
23706 Crenshaw #105 A&B, Torrance, CA
(across from Hof's Hut)

www.peacelandmusiclessons.com



Learn about
World History
US History
Videos • Art • Music
Study Habits

FREE
Enjoy!
History Buffs
Teachers
Students

HistoryDepot.com

RBUSD Alternative Education

1000 Del Amo St., Redondo Beach, CA 90277 • 310/798-8690 • pdhs.rbusd.org/



Jens Brandt
Principal

PDHS Gratitude for RBEF

Patricia Dreizler Continuation High School is excited to be participating in our second RBEF-funded LA Street Art Walk field trip and school mural! Thanks to our generous Education Foundation, our students will now have the opportunity to explore the renowned street art in Downtown Los Angeles' Art District with a guided tour provided by local artists. While

there, they will also get to explore various mediums and stylistic techniques in a graffiti-art workshop.

Street art bridges the traditional ideas that we often hold about classical art with the accessibility to the arts that our students in high school might have. Knowing that the art they are looking at is created by living artists, most of whom are local, can help us feel like we can also connect and even attain those same skills and notoriety in this lifetime, and in this city.

We are definitely lucky to have access to this kind of experience here in LA, and are even luckier to have this opportunity funded by

RBEF's grants. Following this experience, local mural artist Lauren McElroy will also be working alongside the students to teach them about the planning and creative process of designing murals. Every student on campus will get the chance to engage in this project and leave a mark on the campus that we all love.

We currently have another mural at PDHS which was created through a similar project. Former students love to come back and see the mural they helped create. Hopefully, this can become a Dreizler tradition.



A fantastic example of Lauren McElroy's work at schools

Activities

- Tennis
- Pickleball
- Swimming
- Dodgeball
- Basketball
- Minigames
- Arts & Crafts
- And more!

Snack and Lunch provided, please bring proper fitness attire, swimsuit, towel and sunscreen.

Swim lessons available.



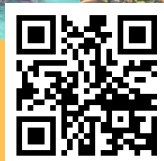
JR. WEEKLY SPORTS CAMP

Spring: 4/1 - 4/12

Summer: 6/10 - 8/30

9 AM - 3 PM

Before & After-Care available



Click [Here](#) for information!

Rate

Members:

\$410 per week

Non-Members

\$480 per week

Day

\$160 per day

2800 Skypark Dr, Torrance

310-530-0630

www.southendclub.com

Email us:

sportscamp@southendclub.com



How Valentine's Day Celebrations Impact Children's Emotional Well-being

and the Importance of Nurturing Healthy Relationships from an Early Age

Valentine's Day, often synonymous with romantic love, can have an impact on children's emotional well-being and lays the foundation for nurturing healthy relationships from an early age. Beyond the exchange of age-appropriate romantic settlements, this day can serve as an additional learning moment for guiding children in understanding diverse forms of love, affection, attention, and building meaningful connections.

Children absorb lessons about love and relationships from their surroundings, and Valentine's Day can be a practical form for parents to model healthy behaviors. By engaging in activities that promote kindness such as crafting cards for friends or expressing appreciation, parents show their children the significance of fostering supportive and caring relationships, thinking about others, sharing kind words and meaningful gifts, and generally showing kindness without the need to spend money, necessarily.

Conversations centered on emotions, respect and effective communication become integral on this day as they should any other day. These discussions should be at a child's developmental level and appropriate regarding home and cultural values, emotional expression, healthy boundaries and understanding effective communication.

Early exposure to varied and appropriate forms of love cultivate emotional intelligence and resilience in children. It is essential for parents to ensure inclusivity acknowledging that not all children experience familial or romantic love similarly. Encouraging empathy toward diverse experiences and cultures fosters an environment of acceptance and understanding.

It is important to ensure children understand and value meaningful relationships, fostering compassionate and nurturing consideration for others.

To learn more, visit memorialcare.org/millerchildrens.



Athena, Age 2



It takes a village.

At just seven weeks old, Athena's heart stopped. MemorialCare Miller Children's & Women's Hospital saved her life. Our cardiac specialists, nurses and therapists all worked together. Reassuring her family. Helping her grow strong. And forging a successful path forward. Because we knew, to help Athena, it would take a village. Dozens of highly trained pediatric specialists across our network. Giving families access to exceptional, specialized care. Now Athena can be a kid again...and her heart is full.

Learn more.
millerchildrens.org/care

Miller Children's & Women's Hospital Long Beach
Cherese Mari Lauhere Children's Village
Outpatient Specialty Centers from the
South Bay to Orange County

RBUSD Child Development

1401 Inglewood Ave., Redondo Beach, CA 90278 • 310/798-8683x1312, 1321 • www.rbusd.org



Theresa Van Dusen
Director

Parent-School Partnerships

By Lila Noguera, Site Supervisor

It is wonderful to see the collaboration between community organizations, families, and schools through organizations like our PTA and RBEF. Establishing strong partnerships can indeed play a crucial role in enhancing student achievement and the overall well-being of our school community.

We at the Washington Child Development Center (CDC) are lucky to have an amazing parent of two CDC students, Mariko Fairly, who also happens to be the executive vice president of the PTA at Washington Elementary. Mariko has served three years on the PTA Board, and she always makes sure that she includes the CDC in everything they do. Events like the Maker's Market, The Magic Run, family movie nights, Popsicle sales, and Staff Appreciation Week, all highlight the thoughtful and engaging activities that contribute to creating a positive and enjoyable environment for our students.

Mariko's dedication to involving CDC families in special events, and coordinating with the CDC staff for activities outside school hours, reflects a genuine commitment to fostering a positive and supportive community. Mariko understands that the majority of our CDC parents are



Washington CDC students enjoying their popsicles from PTA's popsicle sale.

working, and so she goes above and beyond to include them into our activities by flexing the before-or-after-school hours so that they can participate. It is evident that Mariko's efforts have brought joy and smiles to the faces of our students and parents, making them all feel included and appreciated.

Building such partnerships is a key element in creating a supportive and amazing educational environment. The gratitude that we have for Mariko, the PTA, and the RBEF for their collaborative efforts, and the positive impact they have had on our school community, is immeasurable. Kudos to everyone involved who contributes to the success and happiness of our students at Washington Elementary. It is no wonder why our students keep on smiling. Go, Explorers!

RISE
ACADEMY OF DANCE

SUMMER CAMPS and CLASSES!

JULY 8TH - AUGUST 9TH
5 DAY CAMPS (AGES 5 & UP)
HALF DAY & FULL DAY

DANCE TEAM INTENSIVES
INTERMEDIATE & ADVANCE DANCERS
(AGES 9-13YRS)

STRONG EMPHASIS ON TEACHING PROPER DANCE TECHNIQUE AND PERFORMANCE SKILLS IN A FUN, ENCOURAGING ENVIRONMENT

SUMMER SCHEDULE WILL BE RELEASED MID-FEBRUARY

CALL OR VISIT US TODAY TO SCHEDULE YOUR 2024 SUMMER CAMP/CLASS!

633 N PACIFIC COAST HWY,
REDONDO BEACH, CA
(424) 257-8946

FOR MORE DETAILS, PLEASE VISIT
RISEACADEMYOFDANCE.COM

Music Rhapsody

SUMMER MUSIC CAMP
July 22-25, 2024 | Grades K-8

Make new friends, try new instruments, sing, dance, play musical games, and show off what you learn in our camp concert!

Register at musicrhapsody.com/camps

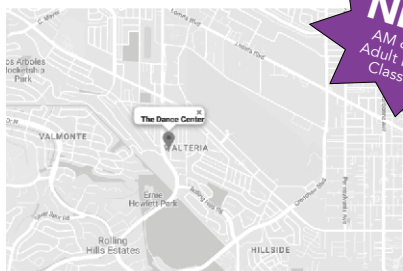


Ballet • Pointe • Tap • Jazz • Contemporary
Hip Hop • Lyrical • Tots & Tutus • Mommy & Me

Ages 3 - 18 and Adult Classes First Class Free!

thedancecenterinc.com

The Dance Center Torrance
 thedancecenter_torrance



24520
Hawthorne Blvd. #100
Torrance, CA
90505

South Bay Hands On Art

By Jessica Wong and Michelle Herrera,
2022-2023 Co-Chairs



Our first three projects of the year - *Gorey's Guest*, *American Campfire* and *Little Birdie* by Rosine Sorbom, based on Southern California Surf Artist Joe Vickers' works, have delighted and enriched our TK through High School students.



While we look forward to 3 more gorgeous projects this year, planning for next year has begun. In partnership with the South Bay Art Alliance (<https://sites.google.com/view/southbayartalliance>), we are soliciting art projects for next year. Projects that meet the criteria detailed on the SBAA website should be submitted by February 12th at the link above.

On March 14th from 9am to 1pm, the SBAA's Project Fair takes place at the Palos Verdes Art Center. For further information regarding SBHOA's Design Committee please visit www.southbayhandsonart.com.

FRAM TRYOUTS

BOYS AND GIRLS

BIRTH YEARS

2014-2013

4:30PM
TO
5:45PM



FEBRUARY 12TH

2012-2011

6:00PM
TO
7:15PM

FEBRUARY 14TH

2010

7:30PM
TO
8:45PM

LA GALAXY
SPORTS COMPLEX
555 MAPLE AVE,
TORRANCE CA, 90503

CONTACT

JACK@FRAMSOCCER.COM
ROBERT@FRAMSOCCER.COM
JESSE@FRAMSOCCER.COM
FOR MORE INFORMATION

REGISTRATION REQUIRED!
WWW.FRAMSOCCER.COM

South Bay Adult School

3401 Inglewood Ave., Redondo Beach, CA 90278 • 310/937-3340 • www.southbayadult.org



Dr. Suzanne Webb
Director

South Bay Adult School Welcomes Students to Winter 2024 Term

South Bay Adult School (SBAS) welcomed students back for the Winter 2024 Term on January 8, 2024. Eleven English as a Second Language (ESL) classes have between 30 and 50 students in each level with a total of approximately 450 students. ESL students will also have opportunities to participate in afternoon Conversation and Computer Skills classes so they may better communicate with family, friends, and the community.



ESL students enjoy each other's company during the morning break.



Congratulations to our Citizenship Preparation class students who returned from the winter break having passed their citizenship exam and participated in their Oath Ceremony.

SBAS also welcomed High School Diploma and GED Preparation students. Many of these students are also enrolled in Adult Basic Education Math and Writing classes getting extra support to meet their goals of graduating. It's never too late to graduate!



SPRING JUNIOR SPORTS CAMP

BECOME A MEMBER AND RECEIVE A DISCOUNT!



APRIL 1- APRIL 12
Monday-Friday
9:00AM-3:00PM
Ages: 5-12 years

DAILY ACTIVITIES
Tennis • Swimming
Pickleball • Basketball
Dodgeball • Kickball
Arts & Crafts
Lunch & Snack

LIMITED SPACE!!

4343 Spencer St., Torrance CA 90503
310-542-7373 / www.westend-club.com

RBUSD Educational Services

1401 Inglewood Ave., Redondo Beach, CA 90278 • 310/937-1221



Dr. Susan Wildes
Assistant
Superintendent

Joining Forces for Stronger Schools

Through over a decade of collaboration, RBEF and RBUSD have partnered to bring innovative programs aimed at enriching the educational experience for students. This partnership provides unique opportunities that go beyond traditional classroom learning.

Every year, RBEF and RBUSD work to design programs that cater to the diverse needs and interests of students. These initiatives encompass a wide range of subjects, from STEAM (science, technology, engineering, arts, and mathematics) to physical education and music, ensuring that every student has access to a well-rounded education.

One notable program emerging from this collaboration is eSports, a program that could not be possible without RBEF funding. This initiative focuses on introducing students to cutting-edge technologies and nurturing their skills in coding, teamwork, and digital innovation. Not only do students work together to compete in age-appropriate gaming but also learn real-world applications and future

career opportunities. The goal is to prepare students for the demands of the future job market and equip them with skills that will make them competitive in a technology-driven world.

Another exciting program is the Museum of Tolerance field trip for all RBUSD eighth-grade students. This unique outside-the-classroom experience allows students to learn about local and global histories that help them to develop empathy. The in-depth visitation supports students in thinking critically about the world around them, building self-awareness, and fostering active social engagement.

These programs not only enhance the academic landscape but also address the diverse interests and talents of students. By fostering a holistic approach to education, the collaboration between the Redondo Beach Education Foundation and the Redondo Beach Unified School District aims to inspire a lifelong love for learning.

Community members can support these initiatives and more, recognizing the transformative impact they can have on the future generation. Please go to www.rbef.org to donate today and ensure these programs and many more continue to shape a brighter future for our community.

Musical String Instruments Word Search Contest

Rules! One word in the list is NOT in the word search.

When you have completed the word search, one word will be left and that word you email to: Kay@schoolnewsrollcall.com (Please put RBUSD in the subject line)

Entries must be received by **March 15, 2024**

From the correct entries one name will be drawn to win a \$20 gift certificate redeemable at Barnes & Noble.

- | | |
|-------------|----------|
| BALALAIKA | LYRE |
| BANJO | MANDOLIN |
| BASS VIOL | ORGAN |
| CELLO | PIANO |
| CLAVICHORD | SITAR |
| CONTRABASS | UKULELE |
| DULCIMER | VIOLA |
| GITAR | VIOLIN |
| HARPSICHORD | ZITHER |
| LUTE | |

D	U	L	C	I	M	E	R	H	E	D	U	Q	O	A
E	R	Y	L	T	L	T	Y	R	R	T	G	A	L	P
P	L	O	J	N	A	B	S	O	E	M	U	O	L	K
P	I	Y	H	I	I	T	H	I	I	H	I	L	E	A
V	H	S	U	C	K	C	W	Z	T	V	T	B	C	H
P	S	J	S	I	I	K	P	U	S	A	A	I	P	V
E	A	L	Z	S	P	V	K	S	Q	L	R	P	Z	G
T	Y	N	P	X	A	U	A	R	A	V	Z	G	Q	X
N	Q	R	A	X	L	B	T	L	S	A	H	U	V	C
G	A	C	G	E	E	J	A	P	C	N	D	L	D	Q
H	Z	L	L	A	N	I	G	R	I	V	C	D	X	D
M	S	E	G	Y	K	C	B	L	T	A	E	D	H	D
F	K	L	M	A	N	D	O	L	I	N	N	I	V	H
C	X	A	H	Y	G	I	A	I	S	C	O	O	K	K
W	G	K	V	X	V	P	D	D	R	V	Q	C	B	I



Andrew Estrada
Principal

Celebrating Individual Abilities through Inclusive Events

By Brooke Mata,
Assistant Principal

Adams Middle School strives to promote individual student abilities by creating an

inclusive campus culture. Through partnerships with RBEF and PTA, various programs have been regularly supported that help bring our community together to celebrate students' personal interests and capabilities.

Through RBEF funding, Adams Friendship Circle Sports Program attended a field trip tour of Sofi Stadium. Adams FC Sports program focuses on inclusivity through sports in monthly athletic events. The event included coaches and athletes alike getting the opportunity of a lifetime by completing their own throwing, kicking, and passing event on the field.

PTA's most popular event with the Adams community is Makers Fair. This event gives Eagles an opportunity to showcase their entrepreneurial and creative skills by selling self-made products. From cupcakes and friendship bracelets, to greeting cards and candles, students and community members celebrate the talents and craftsmanship of our Eagles.

We are grateful for the continued support of RBEF and PTA in our ongoing efforts to create an inclusive environment. Engaging Eagles in a community where individual abilities are celebrated allows them to flourish both academically and socially in preparation for high school.



Adams Middle School Students participating in the Sofi Stadium tour.

Alta Vista Elementary School (K-5)

815 Knob Ave., Redondo Beach, CA 90277 • 310/798-8650 • altavista.rbusd.org



Karin Sato
Principal

Being a Champion for Kids

By Caroline Alvarado, Assistant Principal

At Alta Vista, part of our Mission Statement is to create students who are critical thinkers, life-long learners, and strong

decision makers who are prepared to be successful not only at school but also as adults in a technologically competitive world. We have partnered with our communities to “Be a Champion for Kids” to bring valuable experiences and opportunities to our students.

Our partnership with the PTA has proven to be a vital component of the educational puzzle. Our PTA has orchestrated engaging programs, including a Taiko Drum Assembly, a Snow Day, and a talent show, just to highlight a few. Aligned with their mission to “positively impact the lives of all children and families,” our PTA has played a crucial role in enriching student experiences, fostering cultural appreciation, and providing a supportive environment for showcasing their talents. Notably, the Snow Day initiative has offered a unique and memorable experience that might not be otherwise accessible.



Taiko Drum Assembly

The RBEF also provides students with strong educational experiences. Students at Alta Vista gather and raise awareness and funds via the Skecher’s Walk so that we can continue to provide such programs as music, PE, and band. The RBEF also provides teacher grants to promote innovative learning opportunities and college and career readiness. RBEF’s Whole Child Education is instrumental in ensuring that students will not only

excel academically but also cultivate a spectrum of life skills.

Our unwavering partnership with the PTA and RBEF is not only enduring but thriving, and it is strengthening with each passing school year. The rich fabric of opportunities and experiences that these organizations have provided to our students mirrors the essence of a championship team. At Alta Vista, we consider ourselves truly fortunate to have the PTA and RBEF as valued allies in our commitment to fostering an enriching educational environment.



Skechers Walk

Beryl Heights *Elementary School (K-5)*

920 Beryl St., Redondo Beach, CA 90277 • 310/798-8611 • beryl.rbusd.org



Dr. Maribel Galan
Interim Principal

PTA and RBEF Rock!

Beryl Heights is so fortunate to have the PTA and RBEF dream teams to bring value-added opportunities to our school community!

PTA kicked off the school year with over 300 families attending Back to School Night, with Popsicle treats for all. This event was followed by Family Movie Night and a popcorn truck courtesy of the Redondo Beach Police Department. Families also enjoyed the Trunk or Treat Halloween event and the annual Scholastic Book Fair. Extending the love to our local first responders, a Heroes Breakfast was held, giving us the opportunity to show our gratitude. Multicultural Night celebrated 17 countries while showcasing food, language, culture, dance, and more! PTA also hosted its first Makers Market, providing our youth entrepreneurs the opportunity to sell their homemade items. PTA's biggest schoolwide fundraiser, Race to the Finish, was highly successful and raised over \$70,000! A big thanks to our superintendent, Dr. Nicole Wesley, who agreed to be dunked in the dunk tank by our students in celebration of this highly successful fund-raiser.



What a trooper!! Dr. Wesley just out of the dunk tank surrounded by Buddy the Bulldog and PTA President Chrissie Walsh!!



Mila Rueby, Mandee Rueby, and Allysia Lyn!!

RBEF is committed to music education. The organization provides vocal music instruction for all students in grades one through four as well as instrumental music instruction to all fifth-grade students. In order to offset increasing transportation costs, RBEF generously donates funds to the district to ensure that all fifth-grade students still have the opportunity to attend Science Camp.

By sponsoring the first Lego League Robotics Team, RBEF fosters a passion for technology and innovation and promotes teamwork, problem-solving skills, and creativity among the participating students. Thanks to RBEF, we are so fortunate to have credentialed physical education teachers delivering instruction to all students in grades one through five. Finally, the proceeds from the annual Skechers Friendship Walk provide valuable financial resources for a variety of school needs.

PTA and RBEF, we are forever grateful!

Birney Elementary School (K-5)

1600 Green Ln., Redondo Beach, CA 90278 • 310/798-8626 • birney.rbusd.org



Eileen Leckenby
Principal

There's Something About Birney

When you first step foot on our Birney campus you know that you are in a place that is incredibly special. We at Birney are truly grateful to have such beautiful spaces to learn, such enriching programs to meet the needs of the whole child, and such exceptional academic outcomes! But there are two outstanding organizations that should be thanked for their part in making Birney so wonderful: our PTA and the RBEF.

The RBEF provides students with some incredible enrichment opportunities throughout their elementary school experience. Thanks to the RBEF, our students get a half-year of music and an hour of PE each week from a credentialed teacher. Our fifth-graders also get to learn to play an instrument through our band program, and the fifth-graders' Winter Band Performance this year wowed our families! The growth that our students have shown from learning how to hold their instruments to playing full songs has been wonderful to watch.

Our Robotics Club also exists thanks to RBEF sponsorship. The RBEF even funds our buses for one of the students' most significant elementary school experiences and memory makers: a science camp for the fifth-graders!

The PTA has also had an incredible year so far. We recently raised enough funds to send each grade level on a field trip. We have also hosted many enriching events, such as a parent book club, Multicultural Night, Movie Night, an awe-inspiring Sky Dome assembly, and more.

The parents are eager to volunteer at every opportunity, and our campus is stronger with their support and presence. The PTA's advocacy for our students is evident in every opportunity and interaction on campus. All of this helps add to Birney's famous atmosphere of family and caring.

The students at Birney are curious, kind, and hard-working. Our staff is dedicated and passionate. And we have the honor of working with two organizations that put our students' needs first in providing incredible opportunities for all. The combination of all of these factors makes it undeniable that there's definitely something special about Birney.



Birney's annual Multicultural Night was sponsored by PTA and our student panelists and performers did an amazing job.

Jefferson *Elementary School (K-5)*

600 Harkness Ln., Redondo Beach, CA 90278 • 310/798-8631 • jefferson.rbusd.org



Jeff Winckler
Principal

Teamwork in Action

The PTA and RBEF's partnerships with Jefferson help us provide valuable educational experiences for students that go above and beyond. The PTA runs several programs and events for our community. These programs and events provide opportunities that enrich the lives of students and enhance our school. Additionally, PTA volunteers contribute countless hours of school service in

classrooms and across our campus on a daily, weekly, and monthly basis. RBEF also plays a part in helping support student success across elementary schools throughout RBUSD. In turn, our school community consistently supports RBEF through its annual donor drive and by attending RBEF events such as the Pier-to-Pier Friendship Walk. The combined work of the PTA and RBEF on behalf of our school makes a significant difference in the lives of Jefferson students every day. As a school, we are appreciative to have the support of each organization play such a strong supporting role at Jefferson.



Jefferson Students with PTA and RBEF Leadership Members and Mr. Winckler.

Lincoln Elementary School (K-5)

2223 Plant Ave., Redondo Beach, CA 90278 • 310/798-8631 • lincoln.rbusd.org



Marvin Brown
Principal

Dynamic Duo – PTA and RBEF!

The Lincoln Lion community would like to thank the Lincoln Elementary Parent Teacher Association (PTA) and the Redondo Beach Education Foundation (RBEF) for providing outstanding schoolwide educational opportunities that would not otherwise exist.

Under the leadership of Michelle Freifeld, PTA president, our PTA has 100% membership, with 591 members strong!

We are fortunate to have a large number of parents who volunteer their time and effort to ensure that our students have a wonderful experience while attending Lincoln Elementary. Their support for our school comes in many different ways. The PTA provides enrichment funds for educational field trips, teacher grants, International Night, Movie Night, Lincoln Talent Show, fun assemblies

for students such as Japanese Drumming and Science Guy, kinder music, Hands on Art, Reflections, and student communication folders!

Lincoln has benefited greatly from the RBEF's work to raise money to help our school. As a result of their fund-raising efforts led by Executive Director Kristi Bieber and Lincoln representative Stephane Ernoux, Lincoln teachers received nearly \$5,000 in teacher grants last year. RBEF has provided funds for PE teachers for grades one through five, First Lego League robot kits, and our amazing music and band programs for our first-through-fifth-grade students.

The PTA's and RBEF's efforts have helped Lincoln continue to offer wonderful experiences and a quality education for our students. The Lincoln Community would like to say thank you to the RBEF and PTA for all that they do for our students. We couldn't do it without their help!



Lincoln PTA sponsors Taiko Japanese Drummer assembly.

Madison Elementary School (K-5)

2200 MacKay Ln., Redondo Beach, CA 90278 • 310/798-8623 • madison.rbusd.org



Denine Hollow
Principal

Two Wonderful Organizations!

The PTA at Madison Elementary made a significant impact on enriching the educational experience. From funding captivating field trips, such as hosting the Puppet

Art Theater for kindergarten and the third grade visiting the Columbia Memorial Space Center in Downey, to bringing STEM assemblies and STEM Night to Madison, PTA consistently sparks a love for learning and science. Their commitment extends beyond academics, with events like the family Trunk or Treat and Movie Night, creating a sense of community and fun for all. Initiatives like Morning Milers showcase the PTA's dedication to promoting physical activity and well-being. Additionally, their support for programs like STAR Reading, Battle of the Books, art reflections, Book Fairs, and Hands on Art and garden lessons highlights the breadth of their positive influence on the school. The Madison Elementary community is immensely grateful for the tireless efforts and impactful contributions of the PTA, making our school better and brighter.



Madison PTA brought the Cash Vault to campus as an incentive for the Fall Fundraiser. Students got to grab as much Comet Cash and prizes as they could in 30 seconds.

The Redondo Beach Education Foundation plays a pivotal role in shaping a well-rounded educational experience for our students at Madison. Their support extends to the enrichment of our students' lives in various ways. In fostering a deep appreciation for the arts, RBEF champions the Madison fifth-grade band and vocal music programs, allowing our first-through-fourth-graders to explore and develop their love for music while expanding

their musical knowledge exponentially. Moreover, RBEF recognizes the importance of physical activity to the lives of our students, providing crucial support for our physical education programs in grades one through five. In addition to these valuable initiatives, RBEF also contributes to our students' engagement with STEM education by supporting LEGO Robotics, enabling hands-on learning experiences that stimulate creativity, critical thinking, and teamwork. The diverse support from RBEF truly enhances the overall educational journey for our students, promoting a well-balanced and enriching environment.



Madison's Morning Milers track the students' laps, walking or running around the school track each morning.

Parras Middle School (6-8)

200 N. Lucia Ave., Redondo Beach, CA 90277 • 310/798-8616 • www.parrasmiddle.org



Kathleen Shaw
Principal

Making an Impact

Parras Middle School is not just a place of learning; it's a vibrant community where students, parents, and educators collaborate to create a rich and supportive environment. Our Parent Teacher

Association (PTA) and Redondo Beach Education Foundation (RBEF) play a significant role in enhancing the overall educational experience for our students.

The PTA has been instrumental in promoting parent involvement through a variety of engaging events. Parent involvement is key to student success, and our PTA does tremendous work in providing great opportunities for family engagement. Multicultural Night immediately comes to mind, as it brought our diverse community together to celebrate and share each other's cultures. From hands-on art to the PTSA Reflections Contest and the Maker's Fair, our PTA continuously fosters creativity and a sense of community in our students.



Student creativity shines at the Maker's Fair.

The RBEF also significantly contributes to enriching the academic experience at Parras Middle School. Through the RBEF grant process, students have benefited from several enrichment opportunities. The grant-funded equipment for Panther TV, the school's broadcast journalism club, as well as resources for pottery and 3D printing have all helped to make learning a dynamic, hands-on experience.

The annual Skechers Walk also has real impact. This year's color run to celebrate meeting a walker goal made for a very memorable day! This event not only brings our community together, it also generates resources that directly contribute to providing state-of-the-art equipment, spaces, and opportunities for our students.

Parras Middle School is immensely fortunate to be surrounded by such a supportive community that values education and actively contributes to the growth and development of its students. The impact of the PTA and RBEF is truly felt in every classroom, hallway, and extracurricular activity at Parras Middle School.



Better together: our wonderful RBEF and Parras PTSA volunteers!

Redondo Union High School

One Sea Hawk Way, Redondo Beach, CA 90277 • 310/798-8665 • www.redondounion.org



Anthony Bridi
Principal

Helping Sea Hawks Soar

*By Molly Lower,
Assistant Principal*

As we move into a new semester with so many exciting experiences ahead of us, it is important to look back and see how far we have come with the generous support of the Redondo Beach Education Foundation (RBEF) and the Parent Teacher Student Association (PTSA).

Whether walking, splashing, or diving headfirst into learning, RUHS students are buoyed to success by RBEF. With the help of RBEF, RUHS turned out 443 walkers for the Skechers Walk and held the annual Sea Hawk Splash Competition to commemorate our success. Even RBEF President Doris Donlou-Richmond and RBEF Executive Director Kristi Bieber jumped in!

RBEF also makes a splash at RUHS by funding creative ideas from our teachers through the Innovative Teacher Mini-Grant. This year, RBEF awarded over \$19,000 to support such initiatives as new science lab equipment, new sound equipment for the performing arts, and new presentation equipment to build speaking and listening skills for students. When it comes to our students, RBEF is all in!



PTSA executive officers Kimberly Quihuis, Sondi Kroeger-Foley, and Berenice Vitt prepare to deliver donated gifts for Project Unified.

PTSA is a mainstay of the RUHS community and finds new ways to nurture our students' potential each year. Students tap into their creativity through Hands on Art, a PTSA-sponsored effort by volunteers to provide art instruction. In November, Sea Hawks emulated American artist Albert Bierstadt by experimenting with brush techniques and shadows to create a cozy campfire scene. Hands on Art is so popular, there's a waiting line!

For the holidays, PTSA extended their reach beyond the RUHS campus with Project Unified. Thanks to the efforts of PTSA, our community rallied together to support eight

families in need to celebrate the holidays. On campus, PTSA cultivated the holiday and entrepreneurial spirit in RUHS students by hosting the holiday edition of Sea Hawk Marketplace. Over 50 student vendors participated in "Sea-hawking" their wares, selling a variety of goods that included delectable hip-hop-themed treats, knitted hats, crocheted dinosaurs, and 3D-printed dragons. PTSA helps RUHS students unlock the treasure trove of their potential!

RUHS encourages you to become an active participant in PTSA and RBEF to help extend their generosity and kindness. With the support of PTSA and RBEF, Redondo Union students flourish!



RUHS student flies high in the Sea Hawk Splash competition.

Tulita Elementary School (K-5)

1520 Prospect Ave., Redondo Beach, CA 90277 • 310/798-8628 • tulita.rbusd.org



Alexandra Glunt
Principal

Assemblies, Books, and Murals, Oh My!

The collaboration between the Redondo Beach Education Foundation (RBEF) and Tulita's Parent Teacher Association (PTA) is a powerful force that significantly contributes to the enrichment and special events that enhance our students' learning experiences.

Our PTA has worked tirelessly to provide students with engaging and meaningful assemblies and field trips. Some of the most memorable so far this year have been an anti-bullying assembly led by two professional BMX bikers, and a planetarium assembly where students were transported through space as projected inside an inflatable dome!

Tulita's PTA also organizes after-school events for our students and families. Whether it's Family Movie Night, Family Dances, or Western Night, our Tidalwave families gather together to enjoy these fun-filled events, strengthen our sense of community, and create many lasting memories.

Along with providing our students with incredibly talented PE and music teachers, the RBEF also helps us by supporting special projects. This year, RBEF's partnership with the Skechers Walk fundraiser has allowed us to revamp our school library.

Our librarian, Mrs. Jackie Miller said, "With RBEF and our community's support, we have been able to create a more engaging space in the school library. First, we have been able to update our non-fiction section with books that are more relevant to our students. We have seen an increase in non-fiction books being checked out, because students are finding books that spark their interest."

She added, "Secondly, we have created a welcoming environment to the library by the addition of a beautiful mural. Thank you to the RBEF for helping create a space



A BMX biker jumps over Mrs. Glunt during our antibullying assembly.

The partnership between Tulita, the RBEF, and our PTA is instrumental in providing our school with the resources and support we need to create a well-rounded educational experience for our students.



Tulita library's new mural by Kathleen Salceda.

Washington Elementary School (K-5)

1100 Lilienthal Ln., Redondo Beach, CA 90278 • 310/798-8641 • washington.rbusd.org



Dr. Alyssa O'Grady
Principal

Enriching Students' Lives

Washington's Parent Teacher Association (PTA) and Redondo Beach Educational Foundation are two incredible organizations that have a massive impact on our school campus. When I first walked onto the Washington campus in October, I was amazed

by the facility and the wonderful opportunities that the campus provides for our students. I quickly learned about RBEF and our PTA being two major organizations that decorate our school and fund some of the programs that our students attend.

This year, RBEF provided our students with the opportunity to take music classes. We have an amazing teacher who has a background in music and teaches our students to play different instruments. Students were able to choose the instrument that they were interested in playing and rent one through our music program. The students played their first concert this past December, and to see their growth from the beginning of this year was a phenomenal experience! RBEF also funds our PE teachers on campus. Students can take PE classes from a credentialed teacher while their general education teacher is able to collaborate with other teachers in their grade level. This is a structure that most schools are not fortunate enough to be able to afford.



Washington students proudly holding an RBEF sign during the Sketchers walk.

PTA is such an integral part of Washington Elementary! They have hosted events such as the jog-a-thon, movie nights, and the 70's dance. They are constantly looking for opportunities to raise money to help support the needs we have at the school site. This year, PTA took parent feedback and hired a speaker to come to Washington to help support parents and families. PTA and Washington have a strong relationship that positively impacts our students' experiences. We are so fortunate to have PTA on our campus!

The students at Washington are so fortunate to have these two organizations working hard on their behalf! Because of them, our students are receiving so many enriching programs because of their involvement. Thank you, PTA and RBEF!



Our PTA volunteers distributing t-shirts to our students.

Note-ables



Kate Karp

Sing & Soar with Nanny Nikki

“Nanny Nikki” Rung, her ukulele and her two Dapper Dudes have cued up a musical outing for us! We’re going to dance at the playground, rock to the beat, and learn some valuable lessons while we’re having the best time ever!

“Sing & Soar” is a dream of a collection of songs. Some will choke you up. Some will make you move. Each of them will leave you with a trail of earworms, and you won’t mind a bit.

The infectious ska rhythm on the opener, “The Beat,” introduces a celebration of street musicians who pound buckets and pails on the streets of Nikki’s native Chicago and who sometimes get run off by the police! “Yuk Your Yum” talks about not raining on someone’s parade.



“Almost Made It” begins with being too late to get to the bathroom, but that’s just the attention-getter—it’s really about supporting your friends and yourself in never giving up on anything. “Playground Day” welcomes all children to play, no matter what they look like, where they come from, or how dirty they get.

The collection closes on a soft, thoughtful note with “I Can’t Hear the Moon.” Of course, you can’t. You can’t

hear a smile, a touch or love, either, but you know they’re there.

Children deserve a nanny like Nanny Nikki, and so did we when we were little. We can all have one now!

“Sing & Soar” can be streamed on [Spotify](#) and [Amazon Music](#).

Kate Karp is an editor for *School News Roll Call* and a freelance writer and editor.

Good Dental Health Word Search Contest



Rules! One word in the list is NOT in the word search.
When you have completed the word search, one word will be left and that word you email to: SchoolNewsKay@gmail.com
(Please put RBUSD in the subject line)

Entries must be received by March 15, 2024.
From the correct entries one name will be drawn
\$20 gift card to Barnes & Noble.

- | | | |
|-------------|-------------|--------------|
| Breads | Eggs | Milk |
| Brushing | Examination | Nutrition |
| Cereals | Fish | Orthodontist |
| Checkup | Flossing | Pediatric |
| Daily | Fluoride | Sugar |
| Dairy | Fruits | Tooth |
| Dentist | Guidelines | Vegetables |
| Development | Healthy | Water |
| Diet | Meat | Whole grains |

T	U	S	K	S	R	M	L	E	G	G	S	D	N	W
E	S	N	E	V	E	G	E	T	A	B	L	E	S	A
I	X	I	O	A	P	N	F	O	S	N	A	D	B	T
D	Y	A	T	I	Y	L	I	A	D	R	E	C	R	E
S	H	R	M	N	T	J	R	L	A	V	R	H	U	R
B	E	G	I	I	O	I	P	D	E	S	E	E	S	A
H	A	E	N	A	N	D	R	L	R	D	C	C	H	M
S	L	L	R	I	D	A	O	T	B	S	I	K	I	D
I	T	O	A	L	S	P	T	H	U	R	H	U	N	R
F	H	H	U	N	M	S	K	I	T	N	T	P	G	O
R	Y	W	W	E	C	V	O	A	O	R	O	E	L	J
U	S	Z	N	E	A	E	I	L	X	N	O	Z	M	T
I	J	T	R	L	T	D	D	E	F	B	T	I	A	Y
T	S	I	T	N	E	D	I	R	O	U	L	F	S	Q
S	I	W	N	P	Y	Q	L	B	S	K	E	V	F	I

Congratulations to:
Terri Garcia and Christine Maeda
Contest Winners!

Side-Out: The History of Volleyball

The last part of the 19th century saw the Gilded Age with an emerging middle class in the new industrial world. The century saw the Second Great Awakening, a religious revival ending in the 1830s. Religion was changing and adjusting along with the industrial world. In England, George Williams reacted to the changing world by providing help to young men on the streets of London with the Young Men's Christian Association (YMCA) in 1844. This movement came to Boston in 1851 during the Victorian period of proper values and diet. Diet played an important part in the spiritual world during this period.

The Presbyterian minister Sylvester Graham advocated dietary reform and introduced the vegetarian Graham Cracker in 1829 to reduce desire. Then, John Harvey Kellogg, a member of the Seventh-Day Adventist Church in 1876, became the director of the Battle Creek Sanitarium, which promoted wellness and vegetarianism and developed vegetarian high-fiber foods like cornflakes and peanut butter. Religion and community played an important function in 1890s America.

The YMCA in Boston coined the term body-building—original spelling—and was holding summer camps by 1885 for health reasons. The New England winters were a problem for outdoor activities. That problem was solved in 1891 by James Naismith, a director at the Springfield, Massachusetts, YMCA with a game he called basketball, created for young working men for exercise. This new sport activity was seen as too vigorous for most individuals. The solution was a new game called mintonette, developed for exercise in 1895 by William G. Morgan at the Holyoke, Massachusetts, YMCA. Morgan developed the game from his experience in the YMCA gymnasium. He and two friends drew up 10 rules, and he had A.G. Spalding & Brothers create the ball after the bladder of a basketball proved to be too light.

At a mintonette demonstration game, Alfred T. Halstead noticed the ball flight and suggested the name volley ball. The name was accepted and remained a two-word term until 1952, when it was changed to volleyball. The rules of the game have changed over time.

Spalding created the official classic white volleyball and its size, and the ball kept that form until 2008 when the eight-panel design changed to an 18-panel design. The three-hit rule came into the game in 1916 and was made official in 1920. In 1976, a block was no longer counted as a hit.

The libero play was added in 1998 to give the teams more flexibility in their defense. In 2022, the liberos were allowed to be team captains. This same year, players could legally jump over the scorer's table to keep the ball in play.

The serve in the beginning stated that a ball hitting the net and falling on the opponents' side was a re-serve. That changed in 2001 with continuous playing. The server was now allowed to jump, giving the server a huge advantage so that multiple hits on the body were allowed on the first touch. The ball was originally allowed to touch the hands and arms. In 1996, the rules allowed any part of the body to touch the ball to keep it alive.

Side-out was the term that referred to a team that did not have the serve winning a rally. No point was given—just a change of serve. That rule changed in 2001 with the introduction of rally scoring, where a score is given in each rally and is an international game.

Together, the YMCA and the NCAA developed rules in 1916, and the game was introduced to Europe during the Great War. In 1913, the game was introduced to the Philippines Far Eastern Championship Games between six nations: Hong Kong, the Philippines, Japan, Malay, Siam, and China. By 1947, the Fédération Internationale de Volleyball was formed and moved to Switzerland in 1984, with over 210 members. The first world men's game was played in 1949 and women's in 1952, with the first Olympic game held in 1964. Volleyball moved to the beaches in the 1930s and had its first tournament in 1948.

After Wilt Chamberlain retired from basketball, he was at a volleyball tournament and asked Gene Selznick, a Volleyball Hall of Famer, to coach him. Chamberlain sponsored indoor volleyball teams: the Big Dippers for men and the Little Dippers for women. He became a regular beach volleyball player at the Santa Monica pier. Beach volleyball was admitted to the Olympics in 1996, and Misty May-Treanor and Kerri Walsh won gold medals in 2004, 2008, and 2012. These three individuals have helped to make volleyball the sixth most watched Olympic sport, behind gymnastics, soccer, swimming, track and field, and basketball.

The two games that were created to help the YMCA to develop the mind, body, and spirit were established within five years of each other in Massachusetts!

D.H.Coop is a retired fire/paramedic and retired teacher having taught IB and AP World History 30 years. He continues to substitute, tutor and consult. www.HistoryDepot.com

Los Angeles County Office of Education

9300 Imperial Hwy., Downey, CA 90242 • 562/922-6360 • www.lacoe.edu

New Guidance for Mandated Reporters in Los Angeles County

By Alicia Garoupa, Chief of Wellbeing and Support Services, Los Angeles County Office of Education



Debra Duardo,
M.S.W., Ed.D.
Superintendent

The Los Angeles County Office of Education (LACOE) is creating a framework and catalyzing a movement alongside critical partners to transform the mandated reporting process for educators in Los Angeles County to better support historically underserved children, youth, and families.

New training is taking shape to help mandated reporters make better decisions when it comes to determining whether a situation constitutes a ‘reasonable suspicion’ of reportable child abuse or neglect.

Mandated reporters are individuals who have regular contact with children as part of their job, such as teachers, social workers, healthcare providers, law enforcement officers, and childcare providers. The push for improved training has been accelerated locally by the [Los Angeles County Board of Supervisors motion](#) to create the “LA County Mandated Supporting Initiative” in May 2023. The initiative aims to reform how Mandated Reporters report general neglect cases, improve training, and enhance systems for supporting vulnerable families.

The training is being developed in partnership with the Los Angeles County Department of Children and Family Services, the Los Angeles County Prevention & Promotion Systems Governing Committee and other key partners. The aligned effort is supported by the county board of supervisors and philanthropy, including critical support from the Greater Los Angeles Education Foundation and the Anthony and Jeanne Pritzker Family Foundation.

General neglect is the most common allegation reported to the LA County Child Protection Hotline. However, the vast majority of allegations are not substantiated according to the Los Angeles County Department of Children and Family Services. Inaccurate reporting resulted in the child welfare system’s oversurveillance and harm of marginalized communities of color. The reports made by educators were also found to be the least likely to be substantiated among mandated reporter types. Over reporting and oversurveillance have dire consequences, causing fear, stress, trauma for

families, leading them to lose trust in public entities, such as schools and disrupting the relationship between families and Mandated Reporters. In other words, some reports may actually do more harm than good.

To limit overreporting of families whose needs can be met outside of child protective services agencies, AB 2085 narrowed the legal definition of general neglect to only include circumstances where the child is at substantial risk of suffering serious physical harm or illness and provides that general neglect does not include a parent’s economic disadvantage (i.e., poverty). Eliminating inaccurate reports of general neglect is a key goal of AB 2085 and understanding that poverty does not equal neglect is crucial.

LACOE leaders and representatives from aligned partners have been introducing the mandated supporting framework to various audiences and networks. These meetings drive awareness of the underlying problems, establish improved educator training as a solution, drive early adoption and support regional implementation over time.

The first broad training for mandated reporters was offered to about 700 participants in November 2023 and covered strategies to help improve Mandated Reporters’ capacity to make more accurate, consistent, and equitable decisions about whether to report to the Hotline, or to connect a family to community-based resources.

More focused training will be offered in 2024 that includes sector and discipline specific content to address distinct mandated reporter groups (e.g., educators, law enforcement, health care providers). Additionally, LACOE aims to hold a regional convening in 2024 to continue to raise awareness and build momentum around the mandated supporter concept and aligned implementations strategies. LACOE continues to strive to build regional capacity relevant policy among educators and districts around important changes in law and policy, including AB 2085, and accelerate our call to action to collectively ensure student safety and evolve the mandated reporter process in service to our children, youth, and families. LACOE will provide more details on upcoming training and guidance for Mandated Reporters in 2024.