

FREE

School News

Education + Communication = A Better Nation

Covering the Redondo Beach Unified School District



Volume 11, Issue 94

February 2017



Kindergarten Math Learning is Engaging

For information about registering your child for kindergarten, please see pages 7 and 19.

Board of Education



**Anita
Avrick**
President



**David
Witkin**
Vice President



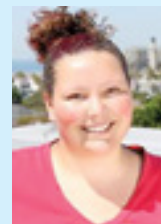
**Brad
Serkin**
Presiding Officer



**Michael R.
Christensen**
Member



**Brad
Waller**
Member



**Madison
Laster**
Student Member

www.SchoolNewsRollCall.com



The Summer Saver drew me in;
I couldn't get it anywhere else.
I feel very secure knowing I have
my money with SchoolsFirst FCU."

JENNIFER Q.
Elementary School Teacher
Member Since 2002



MORE THAN **FINANCIAL SERVICES.** *(financial security)*



FREE CHECKING

You can enjoy checking with no monthly fee, no minimum monthly balance requirement and unlimited check writing.



SUMMER SAVER

Bills don't take the summer off. We can help you set aside funds monthly so you have the money you need when you're not receiving a paycheck.



SUMMERS OFF

Enjoy a worry-free summer. Ask about how you can defer two monthly payments on a SchoolsFirst FCU auto loan without impacting your credit rating.

Apply online today at schoolsfirstfcu.org/membership

Superintendent



A Favor

I don't often ask for favors. Today is an exception.

Before I share my request, here is a little pop quiz for you. What are the two most requested favors that I receive in my role as your proud superintendent of schools? I'll let you think about it for a minute...

Dr. Steven Keller

Without a doubt, over the last few years the two favors most requested of me are: 1) Can you get my child a permit into your great schools? and 2) Can you hook me up with access to one of your great gyms or sports fields? You may laugh, but this is the truth.

So, here is the favor that I'm asking from you. The next time you run into one of our Parent Teacher Association (PTA) leaders or one of our Redondo Beach Educational Foundation (RBEF) leaders, please smile and offer him or her a sincere thank you. I remind folks that, as leaders, you sometimes receive grief and unhappiness. Sure, there is a plus side to PTA and RBEF leading, but the downside can sometimes be painful. So, surprise these fine folks with an acknowledgement of gratitude. What they are providing for our learning community is having a positive impact on your child's educational experience. And, there is this: these leaders work for free. At the very least, if you are a person of few words, share a wink, nod, or smile.

As we ease into 2017, on behalf of my bosses/your Board of Education—Anita Avrick, David Witkin, Brad Serkin, Brad Waller, and Michael Christensen—a heartfelt thank you to Raymur Sweeny, RB PTA Council President; Ted Craddock, RBEF's former president; and Hahn Archer, RBEF's new president. Raymur, Ted, and Hahn are exemplary leaders who talk less and do more for our kids and community. I applaud all that they and their teams deliver.

By the way, getting back to the most requested favors, the answer to both of the questions is a simple "no." That goes for family, friends, neighbors, staff members, and elected officials.

Have a great February, and stay healthy!

Redondo Beach Unified School District
1401 Inglewood Avenue, Redondo Beach, CA 90278
(310) 379-5449 • www.rbusd.org

Board of Education



Michael R. Christensen
Member

A Tradition of Excellence

What is it that makes the Redondo Beach Unified School District excellent? It starts with the best students in the South Bay, fantastic teachers, a world-class staff, and our newly upgraded facilities (thanks to your support of Measures E, C, and Q). But it also takes the help of volunteers... lots of excellent volunteers...to help fill the gaps and support our students. As good as our teachers and staff are, they can't be

everywhere at once. Our excellent volunteers, organized by our world-class PTA, help fill these gaps. Today we have one of the most engaged and effective PTAs in the state. The thousands of PTA/PTSA members add depth to our students' educational experience through the support of arts education, field trips, assemblies, family nights, Battle of the Books, and book fairs (just to name a few of the programs they support). In addition, a core function of the PTA is to advocate at the state and federal levels for every child, with one voice, on critical issues such as funding and regulation. EXCELLENT!

A school district also requires a significant amount of money, and an excellent school system cannot rely on state funding alone. How do we fill that gap? Enter the Redondo Beach Education Foundation (RBEF). The RBEF was formed in 1991 as the first education foundation in California and has raised millions of dollars for our schools. The caring parents, concerned businesses, and enlightened citizens of Redondo Beach have recognized that the money provided to and by the RBEF is an excellent investment in our students and, in turn, our community. And it is paying off! RBEF contributed \$1.5 million last year, helping pay for teachers, teacher grants, field trips, college readiness, intramural sports, music programs, and summer sessions. EXCELLENT!

The PTA and the RBEF, working in concert with each other, demonstrate the Tradition of Excellence that makes our district and our community the best in the South Bay. From the bottom of my heart, THANKS for all you do and for all you give. You are an inspiration to me and my family, and you are one of the main reasons I sought this position on your School Board. Let's continue the Redondo Beach Tradition of Excellence by continuing to volunteer and to invest in our students and our community...together!

Thank you to the many volunteers who contribute to making RBUSD great!



Kay Coop
Founder/Publisher



School News

Education + Communication = A Better Nation
www.schoolnewsrollcall.com
Covering the
REDONDO BEACH UNIFIED SCHOOL DISTRICT

FOUNDER/PUBLISHER: Kay Coop
562/493-3193 • kay@schoolnewsrollcall.com
ADVERTISING SALES: Valerie Reid • 310/874-2716
valerie.schoolnewsrollcall@gmail.com
CONTENT COORDINATOR: Barbra Longiny
GRAPHIC DESIGNER/PRODUCTION: Katie Caress
COPY EDITORS:
Lisa Brock, Kate Karp & Anna Zappia
Netragrednik by Neta Madison



SCHOOL NEWS ROLL CALL, LLC
P.O. Box 728, Seal Beach, CA 90740
562/493-3193
www.schoolnewsrollcall.com
Copyright © 2006, School News Roll Call, LLC
Reproduction in whole or in part without written permission is strictly prohibited unless otherwise stated.
Opinions expressed by contributing writers and guest columnists are their views and not necessarily those of *School News Roll Call*. This publication is privately owned and the right is reserved to select and edit content. The school district does not endorse the advertisers in this publication.

Following Dr. Keller's suggestion in his article, thank you to the PTA and

RB Education Foundation members and team for all they do for students. You often do not appreciate what you have until you no longer have it. There are many districts without active PTA members and some without an Education Foundation. Throughout the years the school articles are about the students volunteering in the community. When children learn at an early age the importance of volunteering and doing for others, it becomes a life long commitment.

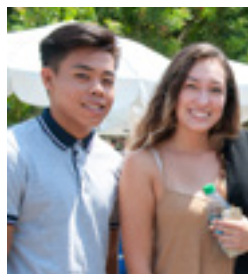
This is our 11th year publishing the excellence from the RBUSD. There have been many changes in the classrooms, but the one constant is academic excellence. Thank you for continuing to include *School News* among your reading choices.

Our next issue is March 1.



GET ONE FREE with this ad when you buy one of equal or lesser value. Can't be combined with any other offer.

310-370-4888
menchie's.com
2515 Artesia Blvd.



Jump-start your future at El Camino College!

PRIORITY REGISTRATION AVAILABLE to El Camino Community College District students who apply and complete the Steps to Enroll by April 30, 2017:
APPLY - PREPARE - TEST - PLAN

Six-week and eight-week summer sessions begin June 19;
Fall semester begins August 26



EL CAMINO COLLEGE

Apply online today at
www.elcamino.edu/priority

Redondo Beach Educational Foundation

RBEF is Invested in Our Community

By Hanh Archer, President

You made the investment with RBEF! This in turn made it possible for RBUSD to provide invaluable opportunities for students in the following ways: Lab Science Teachers, Common Core Math Coaching for Teachers, Vocal Music and Band Teachers, Teacher Grants; College field trips for K-12, PSAT exams, College Readiness culture, Intramural Sports for middle school, Music Center Artists for elementary schools. Our Fall 2016 Investor Drive raised \$400,000.00. Thank you to our families and community members for sharing in this vision of providing our kids with the best, most creative, and well-rounded curriculum.

Our fundraising efforts extend to our business partners, charitable organization and RBEF hosted events. RBEF would love to partner with you! Whether you are a small business owner or part of a large corporation, we invite you to visit our website at www.rbef.org to see how your business partnership with RBEF makes an impact for not only our students, but our community at large.

Fundraising is not enough to make this school district great. Our PTA is the strongest voice for education advocacy for our students. By working together, RBEF and PTA seek to create the best environment for supporting the whole child. After all, while it may be our hopes we are trying to fulfill in our children, it is truly their dreams we want to fulfill.

South Bay Hands On Art

Happy New YEAR from SBHOA!

By Co-Chairs Gina Clancy & Erika Snow Robinson



Sean Clancy, 3rd Grade
Alta Vista Elementary Student showing his
American Impressionism Art!

Pollack. And just as the title says, it was very colorful! Students will learn about abstract art and how to connect feeling and emotions with color and form.

We still have 3 more amazing and fun projects to look forward to and know that the students will thoroughly enjoy them all.

We hope to see you all at our 30th anniversary celebration.

2110-B Artesia Blvd., Box 805 Redondo Beach, CA 90277
www.southbayhandsonart.com

WOW! 2017 is going by so fast already! We hope you all had a wonderful Holiday season and that this new year has brought happiness and health for all.

We started off the new year with our workshop by artist Robin Sarnier with Colorful Chaos, inspired by Jackson

A large advertisement for Lice Clinics of America South Bay. It features a group of about ten happy children of various ages standing in a grassy field under a blue sky with a smiling sun. They are holding a large white sign that reads 'LICE CLINICS OF AMERICA SOUTH BAY URGENT CARE FOR LICE REMOVAL Powered by AirAllé'. To the left, there is a graphic of a smiling sun with the text 'Kid Friendly!'. To the right, a girl is holding a smaller sign that says '1 Treatment 100% Guaranteed'. At the bottom right, the address '2050 Artesia Blvd. #103 Torrance' and the phone number '800.920.LICE' are displayed. At the bottom left, it says 'BY APPOINTMENT 7 DAYS A WEEK' and 'liceclinicsouthbay.com'. The words 'Chemical Free' are written in red at the top center.

Miller Children's & Women's Hospital Long Beach

Negative Effects of Energy Drinks On Your Teen



Saar Danon, M.D.
medical director,
Pediatric
Cardiology and
Congenital
Cardiac
Catheterization,
Miller Children's &
Women's Hospital
Long Beach

Energy drinks have rapidly become a go-to beverage for teens – according to the National Center for Complementary and Integrative Health, energy drinks are the most popular dietary supplement consumed by teens and young adults in the United States.

They may not understand, however, the harm energy drinks can have on their developing bodies. Here's what you and your teen need to know about energy drinks and their long-term effects:

- Almost one third of teens between the ages of 12 and 17-years old consume energy drinks regularly.
- Large amounts of caffeine may harm children's still-developing cardiovascular and nervous systems. A 24 oz. energy drink may contain the same amount of caffeine in four or five cups of coffee.

- According to the American Heart Association, drinking a single 16 oz. energy drink boosts blood pressure and stress hormone responses in young, healthy adults. These changes can lead to an abnormal, irregular heartbeat or even sudden cardiac death.
- Energy drinks may cause heart problems that develop later into adulthood, despite not being immediately present during adolescence.

Energy drinks should not be considered a healthy beverage option for children or young adults. If your teen is looking for a boost of energy, recommend a healthier option, like exercising, stretching or drinking a fruit-filled smoothie.

The Pediatric Heart Center at Miller Children's & Women's Hospital Long Beach provides total care for pediatric and young adult patients with congenital or acquired heart disease. Learn more at MillerChildrens.org/Heart.

2801 Atlantic Ave., Long Beach, CA 90806
800-MEMORIAL MillerChildrens.org/Heart



Our specialty:

Congenital Heart Surgery

Josue's specialty:

Drummer Boy

Our specialists are the leaders in children's health care.

Four months into his mother's pregnancy, an ultrasound revealed the unimaginable: a piece of Josue's heart was missing. With only three of the four heart chambers developed, Josue's mom turned to the Pediatric Heart Center at Miller Children's & Women's Hospital Long Beach. Josue was diagnosed with pulmonary atresia, a complex heart condition that required three surgeries over the course of four years. Now, with the final surgery completed, 4-year-old Josue rocks out to the beat of his own heart.

From tip-top head to itty bitty toes, Miller Children's is the leader in getting kids better.



Follow the leader to Miller Children's.
MillerChildrens.org/Heart | 800-MEMORIAL



Josue, 4-years-old,
Miller Children's
Pediatric Heart Patient

Redondo Beach Council PTA



Raymur Sweeney
President

PTA Taking Action for Healthy Children

California State PTA members are dedicated to promoting effective health education programs and services in schools and communities to offer children, youth and families the skills, tools and abilities they need to make healthy choices.

Through action in the State Capitol, in our schools and in our neighborhoods, concerned California parents and community members advocate for statewide health programs, and we actively participate on a wide variety of statewide committees addressing mental, physical and environmental health issues.

Our current efforts include:

- Supporting immunization legislation to protect vulnerable children
- Promoting comprehensive health education taught by qualified personnel as an integral part of the core school curriculum
- Supporting efforts to provide equal access to quality, affordable, basic and preventive healthcare for all children, youth, pregnant women and their families
- Supporting solutions that enable all children with chronic illness or other healthcare needs to be safe in California schools, such as by promoting education of parents and school personnel on the complexities of disease management
- Educating families to recognize the importance of a healthy environment and the potential dangers that environmental contamination poses for children's developing minds and bodies.
- Bringing greater awareness of behavior-health issues and social/emotional development through collaborating with the school community and creating a full range of services to help all kids thrive.

It is up to all of us to bring concerned people, agencies and organizations together to act on the urgent health needs of California's children: the future of our Golden State.

1401 Inglewood Ave., Redondo Beach, CA 90278
www.rbusd.org

Special education programs are authorized by federal and state laws.

These laws require that a free and appropriate public education shall be offered in the least restrictive environment to all students identified as disabled. Through the District's Student Study Team process and other procedures, a continuous effort is made to locate and identify individuals who might qualify for special education services.



The law also provides that parents may initiate a request to have their child assessed to determine eligibility for special education and/or related services.

This request should be in writing and submitted to:

The Office of Special Education
1401 Inglewood Ave., Redondo Beach, CA 90278

RBUSD Educational Services



Dr. Annette Alpern
Deputy
Superintendent,
Educational
Services

Welcome to the Class of 2030!

Although we are in the midst of winter rains, February is the month when families begin the process of preparing to enroll their youngest children into school this coming fall. We believe that all eight of our RBUSD elementary schools are spectacular, and we want to encourage all of our families to be aware of and attend the various kindergarten-information events scheduled during this time of year.

A is a Redondo Beach resident, you are guaranteed a space in kindergarten at your home/neighborhood school. At Washington Elementary School, we also have a districtwide Spanish/English dual-language-immersion program. To be eligible to participate in the lottery for this program, you must first register your child at your home/neighborhood school and then complete and submit the school-of-choice paperwork in March.

The first date to register your child for kindergarten is Wednesday, March 1. We welcome our graduating Class of 2030!

1401 Inglewood Ave., Redondo Beach, CA 90278 • 310/937-1221

KIRARI WEST CAFE

DEDICATED GLUTEN FREE FACILITY

Our entire inventory of food and products are gluten-free.

We are committed in serving crafted pastries to people who have gluten allergy and Celiac Disease.

- * PASTRY
- * FRESH BAKED BREAD
- * ESPRESSO

BREAKFAST * LUNCH

WWW.KIRARIWEST.COM

707 N PCH
REDONDO BEACH, CA
310 376-5313

FREE COFFEE
OR TEA
WITH ANY PURCHASE

RBUSD Child Development



Theresa Van Dusen
Director

48 Years!

Did you know...

The Child Development Center just celebrated its 48th birthday! We first opened our doors in January 1969 as the Redondo Beach City School District Children's Center, with a grand total of eight children on opening day. By the end of the first year, we had 120 children enrolled and 30 on the

waiting list. In 1970, we opened at our second site at Lincoln Elementary School and continued to expand as the need arose.

We now have a child-development program at all eight elementary schools and both middle schools, called The Zone. Our current enrolment now runs at almost 1,600 students—wow! Our name has even changed from Children's Center to Child Development Center, and our teachers work hard to



Reading time at CDC

design a program and a curriculum to meet the needs of the whole child. We sure have come a long way in 48 years!

1401 Inglewood Ave., Redondo Beach, CA 90278
310/798-8683x1312, 1321 • www.rbusd.org

REDONDO BEACH SCHOOL REPORTER



Redondo Beach Schools Open Children's Center

The Redondo Beach City School District's Children's Center opened Wednesday, January 22, 1969. From opening day, the center has been a place where children can learn to read, write, and think. The new center building is located on the South Redondo Campus, adjacent to the Redondo Beach High School. The center is open from 8:30 a.m. to 5:00 p.m. Monday through Friday. Children's Center is open to all children in the Redondo Beach City School District. For more information, contact the Redondo Beach Board of Education, 1401 Inglewood Ave., Redondo Beach, CA 90278. This newsletter is the property of the Redondo Beach City School District and is loaned to the reader. It should be returned to the District Office.

School Reporter newsletter from 1969

RBUSD Alternative Education



Anthony Bridi
Principal

PTSA and RBEF

The Parent Teacher Student Association (PTSA) and the Redondo Beach Educational Foundation (RBEF) provide funding and support for many of our programs at Redondo Shores High School. Through our partnership with Redondo Union High School, PTSA supports our mission to keep families connected to their school

and community. This collaboration allows us to take part in both schools' events and workshops. In addition, students and staff benefit from PTSA funding for student scholarships and instructional materials for the classroom.

RBEF continues to support our college-going culture by providing resources and opportunities for our students to develop



Redondo Shores students at California State University, Dominguez Hills

skills that will prepare them for college and careers. RBEF funds educational field trips, staff development, PSAT exam costs, and art/science instructional materials. Please continue to support our students and community by joining PTSA and contributing to RBEF today. Thank you for helping us to Raise the Tide!

1000 Del Amo St., Redondo Beach, CA 90277
310/798-8690 • <https://rshs-rbusd-ca.schoolloop.com>



**Redondo Shores students at the
SEA Lab in Redondo Beach**

South Bay Adult School



Dr. Anthony Taranto
Director

Something for Everyone

New Year's resolutions are a tradition that most of us make at the beginning of the new calendar year. It is a time to reflect upon the changes we want to have in the New Year by making a promise to do an act of self-improvement. South Bay Adult School (SBAS) is here to help you fulfill your resolutions and fill your bucket!

Our customer-centered courses are both affordable and easy to access at each of our campuses. Whether it is learning a new language, taking a health and fitness class, or learning to quilt a new blanket for a loved one, SBAS offers a wide range of adult education programs across the South Bay that will fit your individual needs and interests.

It is never too late to recommit to obtaining your high school diploma or high school equivalency. We offer independent study high school diploma and high school equivalency/GED prep classes in a blended-learning environment. Students enrolled in either of these programs attend classes and have access to our curriculum 24 hours a day via an online program called Acellus (from the National Academy of Science).

We will also be continuing our collaboration with El Camino College and improving the pipeline between both schools. We will soon be adding new classes each term based upon community interests and needs.

If you are interested in teaching a class at SBAS, please visit our website. Registration for classes is easy and convenient. Sign up today on our website. We encourage you to take advantage of all that we offer through SBAS to help you achieve your resolutions and goals. What's in your bucket?

3401 Inglewood Ave., Redondo Beach, CA 90278 310/937-3340 • www.southbayadult.org

South Bay
Driving School

\$20 off
One coupon per student

**Proud Sponsor of
Your School for
Over 20 Years!**

*Online and Classroom
Available*

(310) 791-1111

3614 Pacific Coast Hwy., Torrance, CA 90505
Southbaydriving.com

SOUTH BAY FAMILY TREE OPEN HOUSE

Plan now for Fall 2017

Come and visit our award winning classes.

Join our supportive parent-participation program, where you learn with your child.

Parents work with an experienced, credentialed teacher in the classroom once a week.

Children engage in play based learning and hands-on activities.

Fun for everyone!



February 6-10, 2017
9:00am - 11:30am

Plan Now! Fall registration begins the week of March 6, 2017

TRANSITIONAL KINDERGARTEN

Knob Hill
320 Knob Hill
Redondo Beach

INFANTS-TODDLERS

Manhattan East
on Peck Ave.
North of M.B. Blvd.,
Manhattan Beach

TWOs-PRE-K SIBLINGS

North School
417 25th St.
Hermosa Beach

TWOs-PRE-K SIBLINGS

Pacific School
1600 Pacific Ave.
Manhattan Beach

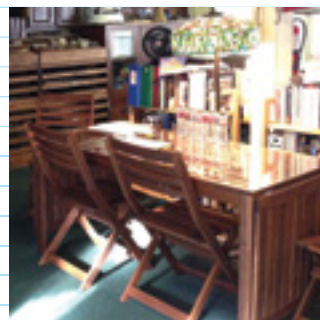
More info? Call 310.376.6211 x11 or x12



History Made Easy!

www.TargetedHistoryTutoring.com

Museum-like setting makes learning history exciting



Learn:

- To Take Notes
- Do Research
- Proper Study Habits

Lessons specifically tailored for individual needs

- World Geography
- American History
- World History
- Government
- Economics

- Hands-on Learning
- After School or Saturday
- One-on-One or Groups
- Grades 7th – 12th
- Public/Private Schools
- Homeschoolers



By Appointment

(562) 852-5242

225 Main Street, Seal Beach

Teachers!
Need Help
Creating Lesson Plans?

Adams *Middle School (6–8)*

2600 Ripley Ave., Redondo Beach, CA 90278 • 310/798-8636 • <http://www.adamsmiddle.org>



Lisa Veal
Principal

Powerful Partners in Excellence

Adams Middle School's partnerships with two incredibly supportive organizations help us establish an environment that fosters our students' social, emotional and physical development in addition to their academic development. Thanks to the PTSA and the Redondo Beach Education Foundation (RBEF), our students are provided an educational experience that is unparalleled.

As Adams families transition to middle school, we encourage parents to stay involved. Statistics indicate that family involvement drops off drastically in middle school, but we invite our parents to be an exception to the rule. Our message is ongoing and clear: we welcome and value parent involvement from the moment they set foot on the campus.

Adams' school community has heard us, and they dedicate countless hours and resources to Adams. Our PTSA's efforts began in the summer with support of our registration process, and they have yet to slow down! We have also had a record year with membership, with nearly 1,000 members demonstrating a level of support that is both heartwarming and highly valued.

The RBEF is another child-advocacy group that we are proud to call our partners in education. The foundation supports districtwide programs including teacher mini-grants, our college-going culture, the Advancement via Individual Determination (AVID) program, the intermural sports program and Common Core math coaching through Loyola Marymount University.

This is the perfect time of the year to say thank you to the PTSA and RBEF for all that they do! We truly could not provide the exceptional educational experience that we do without their continued support. If you are a part of either organization, you have our heartfelt gratitude. If you are not, it is never too late to get involved. You can make a difference today by pledging your support and becoming a part of what makes RBUSD great!



Thanks to RBEF, Adams' newly-formed cheerleading squad

Alta Vista *Elementary (K–5)*

815 Knob Ave., Redondo Beach, CA 90277 • 310/798-8650 • <http://altavista.rbusd.org>



Susan Wildes
Principal

Navigating a Technological World

A 2013 study conducted by the nonprofit research organization Child Trends highlights the increased access to the Internet that young children have been enjoying since 1997. Tablets, cell phones, and home computers have become part of the daily lives of many of our children. So how do we consciously monitor the use of these devices?

With this question in mind, the Alta Vista Elementary School PTA invited Commander Paul LeBaron of the Long Beach Police Department to speak to our families. The focus of this parent education night was to help parents, teachers, and guardians navigate the slew of options when it comes to the Internet, social media, music, and television. In essence, what matters most is understanding the new language that our students and children are engaging

in and beginning to pave an avenue for communicating through what LeBaron refers to as the "noise" of social media.

What helps in this process is a parent's willingness to take the time to notice and listen to the movies, games, and music that their children are enjoying in order to learn and understand the language of the medium and to engage in conversations about their interests. By monitoring social media use and engaging in daily conversations, we can bridge the gap.

There is, however, help out there. A resource that Redondo Beach Unified School District and the PTA recommend is Common Sense Media. Families can find information on the latest social media and technology research, articles on digital citizenship, and useful rating guides for applications, games, and Web sites. Thanks to the support and advocacy of the PTA, Alta Vista parents are armed with the knowledge to help their children navigate the technological world in which we live.

Beryl Heights *Elementary* (K-5)

920 Beryl St., Redondo Beach, CA 90277 • 310/798-8611 • <http://beryl.rbusd.org>



Karen Mohr
Principal

Little Free and Ecologically Sound Library

In November, 20 Beryl Heights Girl Scouts unveiled the Little Free Library in front of our school. It comprised the girls' service project celebrating reusing and recycling resources.

Troop 5615 and its families installed their library after displaying it to their peers at the school's weekly morning town-hall



Girl Scouts at Beryl

meeting. A news helicopter hovered overhead to televise this wonderful event, and Mayor Steve Aspel attended the celebration.

The Little Free Library is one of nine such libraries in the Redondo Beach area, according to LittleFreeLibraries.com. It was built from reclaimed and repurposed household wood and products. It earned the Scouts their Using Resources Wisely patches.

"We wanted our library to be a representation of the girls' hard work and their commitment to making the world a better place, starting with the community they live in," said troop leaders Jessica Rendes and Odette Matthews. "With the girls now in first grade, they are starting to read more and are excited to visit the new Little Free Library and pick out books to read or donate books they've already read."

"It's important for our students and our community to stress the importance of reading and literacy by keeping kids interested in reading and making reading an important part of their lives," said principal Karen Mohr.

As we celebrate reading in the months to come, we have our annual PTA Reading Night March 1, when Beryl students can come and listen to several books written by Dr. Seuss and other favorite authors.



Car Parts Word Search Contest

Rules! One word in the list is NOT in the word search.
When you have completed the word search, one word will be left and that word you email to: Kay@schoolnewsrollcall.com Please put RBUSD in the subject line.

Entries must be received by March 15, 2017

From the correct entries one name will be drawn to win a \$20 gift certificate redeemable at Barnes & Noble.

antenna	gearbox	radio
armrest	hitch	seats
belts	hood	speedometer
blinker	hubcaps	starter
brakes	ignition	wheels
bumper	key	windshield
engine	lock	wipers
fenders	mirror	
gas tank	muffler	

Congratulations

Ben Levy and Kekoa and Kaiulani Kapu
Winners of the December Contests!



Birney *Elementary* (K-5)

1600 Green Ln., Redondo Beach, CA 90278 • 310/798-8626 • <http://birney.rbusd.org>



Mira Baskaron
Principal

Partnerships That Work

Working to support our students' whole-child education takes the help of many individuals and organizations. We value the partnership we have with the PTA and Redondo Beach Education Foundation (RBEF), and their continued support for our students. The support these two groups offer to the schools allows our teachers to provide a richer and more challenging learning environment for our students.

This RBEF and PTA support reaches each school and student in the Redondo Beach Unified School District. Through RBEF at the elementary level, students receive vocal music instruction and twice-weekly band instruction. The third- fourth-, and fifth-grade students receive weekly STEM Lab instruction (Science, Technology, Engineering, and Math). First- and second-grade students receive enriching instruction in performing arts. Elementary students receive the support of school guidance counseling and college-career readiness. The RBEF has the ability to provide our students with people and programs that can enrich their education.

Through the PTA, our students receive a number

of enrichment experiences in addition to the many thousands of hours that our parent volunteers work hard to provide. The Birney PTA helps fund supplemental field trips, assemblies, Hands on Art, Hands on Science, and community events such as the annual carnival, parent education and family nights, direct classroom and teacher support, Thanksgiving dinner for Birney families in need, and so much more!

The RBEF and PTA commit thousands of volunteer hours directly into our classrooms and schools. These volunteers work with programs such as Hands on Art and Hands on Science, Running Clubs, Battle of the Books, First Lego League, Walking School Bus, holiday philanthropy, and many more.



Families enjoying an afternoon of scare crow building sponsored by PTA

Jefferson *Elementary* (K-5)

600 Harkness Ln., Redondo Beach, CA 90278 • 310/798-8631 • <http://jefferson.rbusd.org>



Jeff Winckler
Principal

Supporting Success

Throughout the year, both PTA and Redondo Beach Educational Foundation (RBEF) play significant roles in providing valuable educational experiences for Jefferson Elementary School students. These experiences ultimately help Jefferson and Redondo Beach Unified School District to go above and beyond what many other schools do for their students.

The Jefferson PTA is responsible for a number of events, including assemblies and field trips. They are instrumental in planning our movie night and spring carnival. Programs and events such as these provide unique opportunities that enrich the lives of students and enhance our school community. Our wonderful PTA volunteers also contribute countless hours of service in classrooms and across our school campus.

The RBEF plays an integral role in helping support student success across all eight elementary schools. RBEF supports our schools by contributing to programs such as lab science for third through fifth grades and the instrumental band and artist residency programs for first and second grades. In turn, our school community

consistently supports RBEF through its annual donor drive and by participating in RBEF events, including the Pier to Pier Friendship Walk.

Together the PTA and RBEF make a significant difference in the lives of Jefferson students every day. Their contributions are solid examples of successful partnerships that make our school and community an even better place to be. As a school, we are grateful for the support of these organizations.



RBEF and PTA Team Up to Support Jefferson and RBUSD

Lincoln *Elementary (K-5)*

2223 Plant Ave., Redondo Beach, CA 90278 • 310/798-8646 • <http://lincoln.rbusd.org>



Jane Tasker
Principal

Parent Partners

Have you ever wondered what ingredients it takes to make a school or district go from “Good to Great?” The RBUSD and Lincoln Elementary have found that having awesome students, outstanding teachers, and involved

parents are the keys to success.

The Lincoln PTA's theme this year is “Do Good Things for Kids.” The main role of the Lincoln PTA is to support and enhance the learning environment of children. They do this by building strong and collaborative relationships among parents, teachers, and the school, which in turn provide a successful learning community for our students. Through PTA-sponsored programs, meetings, and events, they provide opportunities to build our community and give input and support around the decisions that affect our school.

The Lincoln PTA provides the following programs to our students: Hands On Art, Hands On Cooking, Movie Night, International Night, Talent Show, Dr. Suess Night, mother/son and father/daughter events, assemblies, and class field trips. The Lincoln PTA also sponsors fun and healthy



PTA Volunteers serve up healthy refreshments after the Lincoln Jog-A-Thon.

fundraisers such as our annual Jog-A-Thon. PTA volunteers can be seen providing support and service in the classrooms and across our campus on a regular basis. Their involvement is critical!

The RBEF provides support across all schools in the RBUSD. Thanks to the generosity of our donors, it has been able to fund the following programs and projects that specifically impact Lincoln Elementary School: college-going culture programs, including a college visit field trip for the fourth-graders; a credentialed science teacher to provide weekly lab experiences for the third through fifth grades; and a Music

Center Artists in Residency Program that provides every first and second-grader with enriching performing arts experiences led by professional artists.

They also provide a credentialed vocal music teacher for high-quality vocal music education for every third and fourth-grader, and credentialed instrumental music teachers for high-quality music education for the fifth-grade band students. We appreciate and value our parent partners!

Madison *Elementary (K-5)*

2200 MacKay Ln., Redondo Beach, CA 90278 • 310/798-8623 • <http://madison.rbusd.org>



Drew Gamet
Principal

Less Is More

One of the reasons that we have made the decision to educate and raise our children in Redondo Beach is the myriad experiences that we can offer our children that go far beyond what is taught in school. Not more than a few blocks from Madison are businesses and organizations that offer classes teaching everything from art and cooking to dance and martial arts.

Additionally, there is a plethora of sports leagues offering mainstream sports such as baseball, basketball, ice hockey and lacrosse. We do not want for opportunities for enriching our children's lives. We are left to ask, however, how much is too much and what role we play in finding and creating quality experiences for our children.

Educating your child on what different activities are available and involving them in the decision to try something out helps them gain confidence in sampling new

activities. It is important, however, to create expectations when trying new activities so that your child learns to really give a new experience a chance. If they do find immediate success or fulfillment through an activity, it is important as a parent to begin to navigate the fine line between support and imperious acts whose genesis lies in our own memories of dreams not realized. In other words, just because you never hit a 90-mile-an-hour fast ball doesn't mean your 6-year-old should.

Ultimately, our young children still want to have playtime with us. We must strive to provide activities to keep our children rapt and engaged and away from the ills of excessive time in front of the many screens that they face during the day. We must continue to make sure that we do not hand the responsibilities of providing meaningful experiences to our children over to well-intentioned strangers. My proudest moments as a father have come when I have created lifelong memories out of daily experiences with my daughter. My reward has come when she has returned the favor.

Parras *Middle School* (6–8)

200 N. Lucia Ave., Redondo Beach, CA 90277 • 310/798-8616 • <http://www.parrasmiddle.org>



Dr. Lars Nygren
Principal

Supporting Our Students and Staff

Parras Middle School has been fortunate to enjoy the enthusiastic support of our PTSA over the years. Our PTSA parents have been actively involved with our school, ensuring our students have a special experience while at Parras. To begin the year, our parent members make sure our registration days run smoothly. They help to register over 1,200 students in a matter of days.

Additionally, parents lend their time to help our teachers in many different ways. PTSA helps our teachers organize our Renaissance and Greek Days, when students get to experience hands-on learning. This year, PTSA is assisting in sending our entire eighth grade to the Jewish Museum of Tolerance. Without their support, this amazing field trip could not happen. Importantly, they also serve as a resource for our school community by hosting informational nights on important topics for parents.

At the end of the school year, the culmination of our PTSA's hard work and organizational efforts can be seen in

the promotion dance for our eighth-grade students. Parents completely transform our cafeteria and the surrounding area into a themed party and dance. Simply put, our school would not be what it is without our PTSA's involvement!

In addition, Parras students benefit greatly from the work of the Redondo Beach Educational Foundation (RBEF). As a result of their fund-raising efforts, Parras has been able to provide our students an extensive afterschool intermural program. Students participate in sports including softball, soccer, flag football, basketball, and many more. For the last two years, RBEF has impacted all students at Parras by funding math coaches, who assist our teachers.

Finally, RBEF has helped to make middle school a little easier for children by funding the Where Everyone Belongs (WEB). This program connects sixth- and eighth-grade students to help the younger students transition smoothly from elementary school.

Because of the efforts of PTSA and RBEF's efforts, Parras continues to offer wonderful experiences and high-quality education for our students.

Redondo Union *High School*

One Sea Hawk Way, Redondo Beach, CA 90277 • 310/798-8665 • <http://www.redondounion.org>



Jens Brandt
Principal

RU Harmonious?

On Saturday, November 19, the Redondo Union High School Marching Band and Guard competed in the California State Band Championships in Huntington Beach. Of the 152 bands that participated in the event, only 25 advanced to the Championships. Of those 25, RUHS finished second in our division, and third overall.

It was a spectacular event, with meticulously planned songs and routines delivered by all of the schools. Ours was called Alice, and it had fantastic flare in both music and costumes as inspired by Lewis Carroll's famous book. If you are interested in learning more about the competition, and seeing the scores of all the schools that competed, please go to www.calstatebandchamps.org/.

The Band and Guard are unique groups at this school. Their performances have the physical demands of a sport and the rehearsed and precise demands of a musical or theatrical performance. These students practice early every day during zero period, and if you are ever feeling sleepy in the morning we encourage you to listen to

them practice, especially the drumline. You will instantly feel more energized!

A big congratulations goes to our amazing Director Ray Vizcarra and his fabulous coaches, along with the Band and Guard Booster Club and all of the parents and community members who have supported these programs and students. At RUHS we believe in developing the whole child, and these students certainly are multi-talented All Stars!



The Redondo Union High School Marching Band and Guard

Tulita *Elementary* (K-5)

1520 Prospect Ave., Redondo Beach, CA 90277 • 310/798-8628 • <http://tulita.rbusd.org>



Dr. Tanaz Bruna
Principal

PTA and RBEF—Thanks!

We're fortunate to have the generous support of our PTA and the Redondo Beach Education Foundation (RBEF). Tulita PTA provides countless hours of volunteer support and numerous enrichment programs yearly, making for a successful, close-knit community. Annually, PTA volunteers host the Western Night carnival, a huge



Tulita PTA members supporting districtwide events by volunteering their time.

community event with bull riding, chili cook-offs and an auction barn. Volunteers spend time in classrooms and host campus events like Western Night and Multicultural Night. They provide assemblies, Hands on Art, field trips and campus beautification.

RBEF generously donates the salaries of our four elementary-science specialists and two music teachers, ensuring STEM-related activities for our students. They also keep visual and performing arts alive at Tulita.

PTA and RBEF can provide this support only through volunteers and contributions. If you're not yet involved, please join PTA and invest in RBEF to give our students the education and school experience they deserve. To everyone who already supports us, thank you!



Thanks to RBEF, music teacher Mr. Hughes, can engage students in culturally diverse music.

Washington *Elementary* (K-5)

1100 Lilienthal Ln., Redondo Beach, CA 90278 • 310/798-8641 • <http://washington.rbusd.org>



Kristen Holm
Principal

We Love Science Lab!

The Washington Elementary School Explorers would like to thank Redondo Beach Educational Foundation (RBEF) and our PTA for supporting our students and providing outstanding educational opportunities school-wide that would otherwise not exist. As a school community, Washington Elementary raised \$35,898 for RBEF! Way to go, Explorers!

RBEF plays a major role in increasing student achievement and student engagement by providing a variety of opportunities for students to participate in physical education, music, science lab, and college readiness. Students in third through fifth grades visit the science lab weekly to conduct experiments aligned with their grade-level standards. Students unanimously agree that science lab is their favorite time of day. Just ask third-grader, Brianna Bogar, who said, "I love going to the science lab because when we grow up and want to get a job in science, we will know more about the options. I now know that I want to be scientist when I grow up."

Cameron Watson, a fourth-grader, shared, "My favorite part of science lab is the experiments. For example, we got

to experiment with gelatin to see if bacteria or mold would grow on it in a petri dish. It was pretty cool!"

Third-grade Keegan Zarefsky said, "Mr. Flores, our science lab teacher, made different birds' beaks out of scissors, spoons, and other stuff. We used them to grab different things to see which one was the best to pick up the food."

Sofia Perez, a fourth grader, shared, "Science lab makes science come alive. When we read about it in books, we don't have to use our imaginations anymore. We understand it better because we get to watch what happens right in front of us. Plus, it's fun!"



Sofia Perez and Keegan Zarefsky working together during science lab



menchie's

GET ONE FREE with this ad when you buy one of equal or lesser value. Can't be combined with any other offer.

310-370-4888
menchies.com
 2515 Artesia Blvd.

AFTERSCHOOL
 Open up their minds to the world before it is too late!

SAVOIR FAIRE
 LANGUAGE ♦ INSTITUTE

Classes available for adults & children

FRENCH	MANDARIN	ITALIAN	SPANISH
GERMAN	JAPANESE	ENGLISH	ARABIC

Redondo Beach Students Special
 Offer Ends 2/28/2017
 Not valid for preschool
 minimum 8 weeks registration
www.sfli-ca.com

Call Now!
310.379.1086

\$100 OFF GROUP CLASS WITH THIS AD*

Redondo Beach Unified School District
Kindergarten Enrollment
STARTS: MARCH 1, 2017

Enrollment for children who plan to enter kindergarten for the 2017/2018 school year will be held at all district elementary schools starting Wednesday, March 1, 2017.

For more information, please visit www.rbusd.org

Note-ables



Kate Karp

The Rocket Went Up!

Educational rock band The Deedle Deedle Dees have swept out the corners where the history texts are stacked and come up with *The Rocket Went Up!*, a CD that will introduce you and the children in your life to people, animals and other things that may but briefly have touched your radar. And if you or your child's teacher is developing

research skills, every subject in the compilation will jump up and yip, "Pick me!" "No, me!"

You've heard of the Boston Tea Party, but what about the Boston Molasses Flood? Yes, it really happened, and no one was happy except for maybe the pancake houses. Everyone's familiar with Thomas Edison, but did you know about his association with Nikola

Tesla? Yes, boys and girls, there was an actual person who came before the car, and you can compare both him and Edison in this pun-filled rap. There's a hilarious love song to pi. It goes on forever in all its irrational emotion. Even Typhoid Mary has a moment—was she guilty, or was she made a scapegoat? And for any of us who's felt different from others—and haven't we all at one time or another—there's "This Is for You."

The musical accompaniment is varied and masterful: Bob Dylan-style folk with a talking bridge, ragtime piano, rap—at least one genre for everyone. So rev up your search engines for a good hunt through all the twists, bends and corners of our world's history and culture!



Contest!



These students are somewhere in this publication. When you find them, email the **page number** to:

Kay@schoolnewsrollcall.com
 (Please put RBUSD in the subject line)

Your entry must be received by January 15, 2017. From the correct entries, we will draw a winner to receive a \$20 gift certificate redeemable at Barnes and Noble.

Kate Karp is an editor for *School News Roll Call* and a freelance writer and editor.

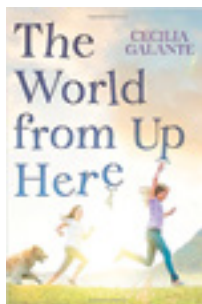
Lucy's Book Review

The World from Up Here



Lucy Davis

Author: Cecilia Galante
Wren Baker has never been brave. She hasn't ever stepped out of her comfort zone, or done something risky and unpredictable.



That all changes when her mother is put in the hospital, and Wren doesn't even know why. Her dad seems to cover everything up, and he sends her to live with her aunt and "perfect" cousin, Sliver. Soon after her move, everything she's doing is dangerous, from riding a spooked horse to trekking up a seemingly haunted mountain. To top it off, what was supposed to be research for a history project turns into one of the most scary experiences of her life. Throughout her adventures, Wren is learning more about her own past than she ever thought she would.

Cecilia Galante's novel is fantastic, and I give it five bookworms out of five for its suspense and thoughtfulness.

Lucy is a fifth grade student that enjoys theater, playing guitar and singing. She's a Harry Potter fanatic and hopes to one day publish a series of her own. Lucy will rate the books 1 to 5 bookworms with 5 being the best.



Metropolitan Educational
Theatre Network

Be part of the cast as we travel down the Yellow Brick Road to the Emerald City with your favorite characters
Dorothy, Scarecrow, Tinman, Lion, Glinda,
The Wicked Witch of the West, The Wizard
and, of course, Toto!

Rehearsals begin Sunday,
February 5, 2017
at the Torrance
Cultural Arts Center
No Experience Necessary
For more information or
late sign ups please call:
1-800-961-0194, ext. 2
(Non-Refundable
Workshop Fee)



www.MET2.org • MET2America@aol.com

Founder Alex H. Urban, renowned educator and theatre director for over 35 years, has designed a program based on building self-esteem, grace, discipline, and poise.

Metropolitan Educational Theatre Network Is a
Non-Profit Organization (#33-0794860)

Give your kids the

Best Birthday Ever!



We do **EVERYTHING**
from invites to clean-up.

**All you have to
do is show up!**

Book your party by **June 30** and receive a
**FREE Inflatable Obstacle
Course Upgrade!** A \$125 value!



* Includes 30 minutes of private use. Age restrictions apply. Subject to weather.

310-546-7708 • AdventurePlex.org



**BOOK
ONLINE!**
AdventurePlex.org

Full Range of
Classes for
All Ages



New Students
bring in this ad
to receive a
free class!

*Fusion Studios is a place where students of all ages
can come together and express themselves in the arts.*

310.540.6401   @thefusionstudios

www.thefusiondancestudio.com

Peaceland Music & Repair GUITAR LESSONS

Guitar, Piano, Voice,
Bass, Drums

Also: Ukulele, Banjo, Mandolin

James Musser

Nominated Best LA Band '96
Best Guitar '97 LA Music Awards

All Ages, Levels & Styles

Days, Evening & Weekends



(310) 650-4021

www.peacelandmusic.com

peaceland@peacelandmusic.com

23706 Crenshaw #105 A&B,
Torrance, CA • (across from Hof's Hut)

Visit us on:

MySpace.com/PeacelandMusic • YouTube.com/PeacelandMusic

Beach Cities Health District



#SweatLocal with Free Fitness Weekends



Kerianne Lawson
Director of
Lifespan Services

Beginning February 10th, families will be given the chance to exercise at top studios and gyms in the Beach Cities — without sweating the cost! — thanks to Beach Cities Health District's annual "Free Fitness Weekends" initiative. The kick-off is slated for February 10–12 at studios in Hermosa Beach, Manhattan Beach and Redondo Beach.

More than 25 gyms and fitness studios have already pledged to provide at least one

free workout class per month as part of the healthy initiative designed to get kids, adults and older adults moving and exercising. Free classes range from standard favorites like Pilates and yoga to more adventurous options like standup paddle boarding and trampolining. Children's fitness classes at popular play facilities like AdventurePlex in Manhattan Beach are also being offered as part of the initiative.



Free Fitness Weekends will take place February 10–12, March 10–12 and April 7–9. There is no cost to participate, however, registration for certain classes is required. To see the complete schedule, including class times, dates and descriptions, visit bchd.org/freefitness.

514 N. Prospect Ave., Redondo Beach, CA 90277 • 310/374-3426
www.bchd.org

Rolling Hills Montessori School

in a beautiful rural setting,
offering 3 programs:
**Toddler, Pre-Primary
and Transition (18 months - 7 years)**

- Full day and half day
- Chinese/Spanish and Music inclusive
- 10 Extra curricular classes available
- Field Trips
- Community atmosphere
- Fully credentialed staff

Spaces are limited.

For more info please call: **(310) 377-5722**

Rolling Hills Montessori

26825 Rolling Hills Road
Rolling Hills Estates, CA 90274
www.rollinghillsmontessori.com



K-12 | Math Help | Math Enrichment | Test Prep | Homework Help

MATHNASIUM
The Math Learning Center

We Make Math Make Sense.

At Mathnasium, we believe that every child has the ability to be successful in math—it's just a matter of teaching the way that makes sense to them. When math makes sense, kids leap way ahead—whether they started out far behind or already ahead in math.

**NOW
ENROLLING!**

\$100 Off
First
Month
Membership

MATHNASIUM
The Math Learning Center

*** Redondo Beach**

234 S. Pacific Coast Hwy., #106

Redondo Beach, CA 90277

(424) 247-7304

*new customers only
expires 3/1/17

mathnasium.com/redondobeach
redondobeach@mathnasium.com






REDONDO BEACH UNIFIED SCHOOL DISTRICT

Kindergarten Information Events – Spring 2017 Class of 2030

Kindergarten

SCHOOL	EVENT	EVENT	EVENT
Alta Vista 815 Knob Hill (310) 798-8650	School Tours Monday, January 23rd, 8:30 am Friday, February 3rd, 8:30 am Wednesday, February 22nd, 8:30 am	Kindergarten Round-Up Wednesday, February 15th, 2:00 pm	School Tour Tuesday, March 7th, 8:30 am Friday, April 7th, 8:30 am
Beryl Heights 920 Beryl Street (310) 798-8611	Classroom Tours Wednesday, February 22nd, 1:30-4:00 pm Wednesday, March 15th, 1:30 -4:00 pm	Beryl Carnival Saturday, April 29th, 11:00-4:00 pm (all incoming Kdg students get 10 free tickets)	Kindergarten Information event Saturday, June 3rd, 10:00-11:00 am
Birney 1600 Green Lane (310) 798-8626	Kindergarten Parent Information Event Wednesday, February 1st, 2:00 pm	School and Classroom Tours Monday, February 13th, 9:00am & 1:45 pm Tuesday, February 14th, 9:00am & 1:45 pm	Kindergarten Social (parents and students) Tuesday, June 6th, 3:00 pm
Jefferson 600 Harkness Lane (310) 798-8631	Kindergarten Round-Up (Parents Only) Wednesday, February 8th, 5:30 – 7:00 pm Cafeteria	School and Classroom Tours Monday, February 13th, 12:30 pm Thursday, February 16th, 9:00 am	School and Classroom Tours Thursday, February 23rd, 9:00 am & 12:30 pm
Lincoln 2223 Plant Avenue (310) 798-8646	School and Classroom Tours (Parents ONLY) Thursday, February 9th, 8:30am & 12:00 pm Tuesday, February 14th, 8:30 am	Kindergarten Information Meet- ing (Parents and Children) Wednesday, February 22nd, 12:30 pm Meet the principal, teachers, PTA and CDC Staff	
Madison 2200 MacKay Lane (310) 798-8623	School and Classroom Tours Wednesday, February 15th, 7:45am & 3:00 pm Thursday, February 23rd, 7:45am & 3:00 pm	Kindergarten/TK Information Event Wednesday, February 22nd, 2:00 pm	School and Classroom Tours Monday, April 24th, 7:45am & 3 pm Tuesday, May 16th, 7:45 am
Tulita 1520 Prospect Avenue (310) 798-8628	Kindergarten/TK Round-Up & Information Mtg Wednesday, February 15th, 2:00 p.m. Cafeteria	Campus Tour Monday, February 27th, 9:30 am & 1:00 pm	Campus Tours Thursday, March 23rd, 1:00 pm
Washington 1100 Lilienthal Lane (310) 798-8641	Information Night (Parents ONLY) Wednesday, February 8th , 6:00 pm	One-on-One Tours with Principal *Must call front office after Jan. 21st to reserve a time. February 13th, February 21st, or February 28th 8:30 am. – 2:30 pm	Kindergarten Round-Up May 10th, 2:15- 2:45 pm & 3:00-3:15 pm May 17th, 2:15- 2:45 pm & 3:00- 3:15 pm
Washington Language Academy Spanish Dual Immersion 1100 Lilienthal Lane (310) 798-8641	Dual Immersion Group Tours – (RSVP REQUIRED) Tuesday, February 7th, 10:00 am Thursday, February 23rd, 10:00 am		 

The gift of a brighter future.



With a Gift of College gift card, now you can easily start or contribute to a 529 College Savings Plan account for the special child in your life. So, mark that next birthday, bar mitzvah, quinceañera or baby shower with a gift that can make higher education that much more possible.

Pick up a Gift of College gift card today at
ScholarShare.com or at Toys "R" Us and Babies "R" Us.



SCHOLARSHARE

CALIFORNIA'S 529 COLLEGE SAVINGS PLAN



JOHN CHIANG
TREASURER
STATE OF CALIFORNIA



Consider the investment objectives, risks, charges and expenses before investing in the ScholarShare College Savings Plan. Visit ScholarShare.com for a Plan Disclosure Booklet containing this and other information. Read it carefully.

Investments in the Plan are neither insured nor guaranteed, and there is a risk of investment loss. TIAA-CREF Tuition Financing, Inc., Plan Manager. TIAA-CREF Individual & Institutional Services, LLC, member FINRA, distributor and underwriter for ScholarShare College Savings Plan. Taxpayers should seek advice from an independent tax advisor based on their own particular circumstances. Non-qualified withdrawals may be subject to federal and state taxes and the additional federal 10% tax. Non-qualified withdrawals may also be subject to an additional 2.5% California tax on earnings. Before investing in a 529 plan, consider whether the state where you or your Beneficiary resides has a 529 plan that offers favorable state tax benefits that are available if you invest in that state's 529 plan. C37234