

FREE

School News

Education + Communication = A Better Nation

Covering the Redondo Beach Unified School District



Volume 10, Issue 85

February 2016



The Class of 2028 welcomes the Class of 2029.

Board of Education



Michael R. Christensen
President



Anita Avrick
Vice President



Brad Serkin
Presiding Officer



Brad Waller
Member



David Witkin
Member



Chris Paludi
Student Member



Helping **U**
grow up healthy

UCLA — the right start for kids

What's the only thing more important than your health? If you're like most people, it's your child's. At UCLA, we understand. We offer complete care for infants, children and teens at our hospitals and offices throughout the area. It's the world-renowned care UCLA is known for, right in your neighborhood — for the ones you care about most.



1-800-UCLA-MD1 (1-800-825-2631) uclahealth.org/southbay
Primary and specialty care available

Pediatricians available in:

Manhattan Beach

Pediatrics • Family Medicine
2501 N. Sepulveda Blvd, Ste 100/101
(310) 546-8702 / (310) 546-4599

Palos Verdes

Pediatrics • Family Medicine
501 Deep Valley Dr, Ste 100
(310) 303-3953

Redondo Beach

Pediatrics • Family Medicine
514 N. Prospect Ave
(310) 937-8555

Torrance

Pediatrics
23550 Hawthorne Blvd, Ste 180
(310) 373-4303

Superintendent



School Safety

Much has been written lately in our local papers about school safety. Please let me start by stating this clearly—your children are safe in our schools. We are prepared for many circumstances: fire, earthquake, and an active shooter.

Dr. Steven Keller

The public discussion, even debate, regarding school safety is a good thing. This discourse will only enhance what we are already doing to create even safer learning communities. That's what makes the Redondo Beach Unified School District (RBUSD) such an impressive school district—good is not good enough. We expect more. I have summarized some of the more significant school safety improvements below.

This summer, we will complete front entrance modifications at Perras Middle School. This safety enhancement will force school access through the main office and improve campus safety. We made this same modification at Adams Middle School last summer.

All of our school doors are in the process of having additional locking latches installed. Torrance Unified School District and Palos Verdes Unified School District currently use this latch and have found it quite effective in lock-down situations.

We are installing additional cameras and motion lights at Redondo Union High School (RUHS). All of our school sites have working security cameras; we just felt RUHS needed a few more, given the size of the campus.

Each school site has a “grab and go” safety plan. These plans are modified annually. School sites practice these safety plans monthly.

With the arrival of Redondo Beach Police Chief Keith Kauffman comes a modified approach to “active shooter” training. Our school sites are currently undergoing this newer approach, and ideally all of our school staff members will have received this training by the end of the school year.

We have installed over two miles of wrought iron fencing over the last eight years, mostly on the perimeters of our school campuses. Unlike chain-link fencing, wrought iron fencing is difficult to climb.

Perhaps our greatest strength to combat a worst-case scenario situation (including fire, earthquake, or active shooter) is having great students and great staff members. Our students and staff members are bright, care personally about one another, and are very proud of their schools. Plenty of research suggests that the more students and staff members are engaged in their learning community, the less likely it is that an unfortunate incident will occur from within the school community. Of course, this may not help in the case of an earthquake, but in the other crisis situations it certainly does.

Board of Education



Redirecting Dollars Toward the Classroom

When I ran for School Board, I envisioned (and told voters) that, if elected, I would “redirect dollars towards the classroom,” a maxim that's hard to argue with and certainly something I truly believe. Who doesn't want the most direct, biggest bang for their educational buck?

David Witkin
Member

I can assure you, my fellow Board members and I try to fulfill this ambition

every day, with every budget item we scrutinize and approve. In reality, however, I have learned this past year that, when it comes to money, Board issues are, by and large, some steps removed from the classroom, including authorizing school bus payments, budgeting for paint jobs and repairs, and advising on teacher contract negotiations.

Have a program you want to see adopted in your son's or daughter's classroom? Think Redondo needs extra resources in college entrance exam preparation or software for aspiring engineers? Want to directly impact our classrooms? Turn to RBEF and PTA. Without them, and without your sustained support of both of them, our classroom- and school-level performance will erode. With your strong support of RBEF and PTA, our classrooms and students can shine ever brighter.

Our principals are the most direct beneficiaries of these two indispensable organizations, and they will speak to the impact of RBEF and PTA at their own schools in the following pages. But let me contrast the Board-level budget items I spoke of earlier with a quick look at items funded by RBEF and PTA: financial aid workshops; math coaching to help our teachers transition to Common Core State Standards; science camp and credentialed science teachers for fourth and fifth grades; and afterschool programs in music, sculpting, and drawing.

To “redirect dollars toward the classroom,” direct your dollars to RBEF and PTA!

Board of Education Regular Meeting Schedule

February 9
February 23

March 8
March 22

April 12*
April 26

***4/12/2016 – Organizational Meeting**

Finally, if you, the reader, ever see or hear something that can compromise student or staff safety, please call 911 immediately or, if it is not urgent, the Redondo Beach Police Department (RBPd) regular desk number, (310) 379-2477.

The RBUSD Board of Education, the administrators, the staff, and the RBPd are serious about student safety. We are absolutely united in this pursuit.

Redondo Beach Unified School District

1401 Inglewood Avenue, Redondo Beach, CA 90278 • (310) 379-5449 • www.rbusd.org



Kay Coop
Founder/Publisher



School News

Education + Communication = A Better Nation

www.schoolnewsrollcall.com

Covering the

REDONDO BEACH UNIFIED SCHOOL DISTRICT

FOUNDER/PUBLISHER: Kay Coop

562/493-3193 • kay@schoolnewsrollcall.com

ADVERTISING SALES: Valerie Reid • 310/874-2716

valerie.schoolnewsrollcall@gmail.com

CONTENT COORDINATOR: Barbra Longiny

GRAPHIC DESIGNER: Meshel Negrete

COPY EDITORS:

Lisa Brock, Kate Karp & Anna Zappia



SCHOOL NEWS ROLL CALL, LLC

P.O. Box 728, Seal Beach, CA 90740

562/493-3193

www.schoolnewsrollcall.com

Copyright © 2006, School News Roll Call, LLC

Reproduction in whole or in part without written permission is strictly prohibited unless otherwise stated. Opinions expressed by contributing writers and guest columnists are their views and not necessarily those of *School News Roll Call*. This publication is privately owned and the right is reserved to select and edit content. The school district does not endorse the advertisers in this publication.



This is our 10th anniversary publishing RBUSD *School News*. Every issue has been fun to publish and I appreciate your faithful readership.

Dr. Keller's message on page 3 is indicative of changes in today's world. It is reassuring to know the District is prepared.

Speaking of changes, it is hard to believe the students entering Kindergarten are the Class of 2029! Any of you remember the dreaded Y2K when the calendar rolled over to 2000? Technology has advanced to be integrated into every aspect of our lives. I heard a news commentator reflecting on the death of Glenn Frey

and how his entire family enjoyed his music. The commentator told about road trips and his six brothers and sisters all had to agree on the music played on the family 8-track (8-track is another subject). Frey's music was liked by all ages. It struck me how different it is for children today. It seems everyone in the car has earphones and is listening to their own selections without interacting with others in the car. Do your children know your favorite music genre? It might be a fun road trip game to try to answer questions about other's in the family. Could be enlightening.

Our next issue is March 2nd.

UCLA Extension

Life-Long Learning for Educators

UCLA Extension Education Programs Get there from here.

Learn more about the many programs we offer by visiting us at uclaextension.edu/teachers or call (310) 825-4191.



17560-15

Special education programs are authorized by federal and state laws.

These laws require that a free and appropriate public education shall be offered in the least restrictive environment to all students identified as disabled. Through the District's Student Study Team process and other procedures, a continuous effort is made to locate and identify individuals who might qualify for special education services.



The law also provides that parents may initiate a request to have their child assessed to determine eligibility for special education and/or related services.

This request should be in writing and submitted to:

The Office of Special Education

1401 Inglewood Ave., Redondo Beach, CA 90278

Redondo Beach Unified School District
Kindergarten Enrollment
STARTS: MARCH 1, 2016

Enrollment for children who plan to enter kindergarten for the 2016/2017 school year will be held at all district elementary schools starting Tuesday, March 1, 2016.

For more information, please visit www.rbusd.org

Beach Cities Health District



Lauren Nakano
Director
Blue Zones Project

Free Purpose Workshop, Feb. 10

Buy a gym membership – and actually use it this time. Run a marathon. Eat more fruits and vegetables. January 2016 is here and, for many of us, that means we are deeply focused on setting health-related goals.

But even with our country's intense focus on self-improvement each New Year, pledging to live with a clear sense of purpose conspicuously falls outside the top 10 resolutions annually – despite an

overwhelming body of research showing the mental and physical health benefits associated with discovering what motivates you to get out of bed each morning.

Take, for example, the research of Blue Zones Project Founder and National Geographic Explorer Dan Buettner who spent years observing the behaviors of people in the five areas of the world with the highest rate of centenarians – Okinawa, Japan; Loma Linda, California; Nicoya, Costa Rica; Sardinia, Italy; and Ikaria, Greece.

“The Okinawans call it *ikigai* and the Nicoyans call it *plan de vida*; for both it translates to ‘why I wake up in the morning.’ In all Blue Zones people had something to live for beyond just work,” writes Buettner in his New York Times best-selling book *The Blue Zones Solution*.

Fellow best-selling author and renowned world expert on purpose Richard Leider, who will be leading a free workshop in Hermosa Beach on Feb. 10, defines purpose as “the reason we are alive.” He stresses that each of us needs a reason to face the day each morning – because without it we can lose our will to live.

Both Buettner and Leider also agree that purpose significantly impacts a person's health, happiness and longevity and that it's never too late for people discover it, regardless of age.

In fact, Buettner believes purpose may add up to seven additional years to your life expectancy. Now that's what I call resolution-worthy. Families can start the New Year with purpose by attending a free workshop on Feb. 10 at 6 p.m. at the Hermosa Beach Community Center.



514 N. Prospect Ave., Redondo Beach, CA 90277
310/374-3426 • www.bchd.org



Hundreds of Classes Added!



Jump-start your future this summer at El Camino College!

Choose from two summer sessions:

- Eight-week session begins June 20
- Six-week session begins July 12

Priority registration is available to El Camino Community College District students who complete the four Steps to Enroll by March 31, 2016: **APPLY - PREPARE - TEST - PLAN**



EL CAMINO COLLEGE

Apply online today at
www.elcamino.edu/priority

The Heart of An Athlete



Dr. Shaun Setty
Medical Director,
Pediatric & Adult
Cardiac Surgery
Program, Pediatric
Heart Center

The news has been filled with heartbreaking stories of young athletes dying during the middle of a sporting game. While many assume these children are suffering from other medical conditions, the majority of these children are passing away from

an undiagnosed enlarged heart causing an abnormal heart rhythm (arrhythmia) when stressed. This causes them to collapse and is labeled sudden cardiac death.

Congenital heart defects are a malformation of blood vessels or the heart structure that occurs before birth. Depending on the defect, symptoms can appear right away or they may not manifest until a child participates in sports. In some cases, symptoms may not present until adulthood.



Constant heavy breathing and extreme fatigue are common warning signs of a congenital heart defect. If your child gets tired very quickly or easily, or their heart races, during physical activity, this could be a sign that their heart can't maintain the ability to meet their body's needs.

Be sure to educate yourself and your young athletes on potential signs and symptoms of a congenital heart defect. Encourage them to talk with you if they are experiencing any health concerns during sports and make sure they see their physician for an annual sports physical.

Knowing the signs and symptoms and getting annual check-ups can help catch a congenital heart defect before it becomes a more serious issue for your young athletes.

2801 Atlantic Ave., Long Beach, CA 90806
(855) 999-MCH1(6241)
MillerChildrens.org/Heart



Our specialists are the leaders in children's health care.

At a routine 3-month-old check-up, Piper's doctor found a murmur in her heart. She was referred for more testing and it was discovered that she was suffering from heart failure due to a life-threatening congenital heart defect. Immediately she was sent to Miller Children's Pediatric Heart Center where just a few hours later she was undergoing surgery from cardiothoracic surgeon Dr. Shaun Setty. With the help of the dedicated care team at the Pediatric Heart Center, Piper is back to giggling with her older siblings.

From tip-top head to itty bitty toes, Miller Children's is the leader in getting kids better.

Follow the leader to Miller Children's.

MillerChildrens.org/Heart

800-MEMORIAL

Piper's specialty:
Giggle Monster




Our specialty:
Congenital Heart
Defect Surgery

Piper, 6-months-old,
Miller Children's
Congenital Heart Defect Patient



REDONDO BEACH UNIFIED SCHOOL DISTRICT
Kindergarten Information Events – Spring 2016
 Class of 2029

Kindergarten

SCHOOL	EVENT	EVENT	EVENT
Alta Vista 815 Knob Hill (310) 798-8650	School Tours Friday, January 22nd, 8:30 a.m. Friday, February 5th, 8:30 a.m.	Kindergarten Round-Up Wednesday, February 10th, 2:00 p.m.	School Tour Friday, February 26th, 8:30 a.m.
Beryl Heights 920 Beryl Street (310) 798-8611	Classroom Tours Wednesday, February 10th, 3:00 – 5:00 p.m. Wednesday, February 17th, 3:00 – 5:00 p.m.	Kindergarten Information Event Saturday, May 21st, 10:00 – 11:00 a.m.	
Birney 1600 Green Lane (310) 798-8626	Parent Information Night Wednesday, February 10th, 5:00 p.m.	School and Classroom Tours Friday, February 19th, 9:00 a.m. & 1:45 p.m. Monday, February 22nd, 9:00 a.m. & 1:45 p.m.	
Jefferson 600 Harkness Lane (310) 798-8631	School and Classroom Tours Thursday, February 4th, 9:00 a.m. & 12:30 p.m. Thursday, February 11th, 9:00 a.m.	Kindergarten Round-Up Wednesday, February 17th, 5:30 – 7:00 p.m.	School and Classroom Tours Tuesday, February 23rd, 9:00 a.m.
Lincoln 2223 Plant Avenue (310) 798-8646	School and Classroom Tours (Parents ONLY) Tuesday, February 2nd, 8:30 a.m. & 12:00 p.m. Tuesday, February 9th, 8:30 a.m. & 12:00 p.m.	Information Meeting (Parents and Children) Wednesday, February, 24th, 12:00 p.m. Meet the principal, teachers, PTA and CDC Staff	
Madison 2200 MacKay Lane (310) 798-8623	School and Classroom Tours Wednesday, February 10th, 7:45 a.m. & 2:45 p.m. Thursday, February 25th, 7:45 a.m. & 2:45 p.m.	Kindergarten/TK Information Event Wednesday, February 24th, 2:00 p.m.	
Tulita 1520 Prospect Avenue (310) 798-8628	Kindergarten Round-Up Wednesday, February 17th, 2:00 p.m. Cafeteria	TK Information Meeting for Parents Wednesday, February 24th, 2:00 p.m. Cafeteria	Campus Tours Tuesday, March 1st, 9:30 a.m. and 1:00 p.m. Thursday, March 24th, 10:00 a.m.
Washington 1100 Lilienthal Lane (310) 798-8641	Information Night (Parents ONLY) Wednesday, February 3rd, 6:00 p.m.	One-on-One Tours with Principal *Must call front office after Jan. 23rd to reserve a time. Thursdays: Feb. 4th, Feb 11th, or Feb. 25th 8:30 a.m. – 2:30 p.m. *by appt. only	Kindergarten Round-Up Session 1: May 11th, 2:15 – 2:45 p.m. Session 2: May 11th, 3:00 – 3:30 p.m. Session 3: May 18th, 2:15- 2:45 p.m.

Washington Language Academy Spanish Dual Immersion
1100 Lilienthal Lane
(310) 798-8641

Dual Immersion Group Tours – (RSVP REQUIRED)
Tuesday, February 2nd,
10:00 a.m.
Tuesday, February 23rd,
10:00 a.m.



RBUSD Alternative Education



Sue Hall
Principal

PTSA/RBEF

*By Sue Hall, Principal and
Saima Qazi, Representative – PTSA*

Parents at Redondo Shores High School play a key role in helping their children to become successful adults. Our strong school-parent partnership supports our students as they develop into Self-directed, Healthy, Optimistic, Responsible, Effective, and Successful (SHORES) citizens. Both the Parent Teacher Student Association (PTSA) and the Redondo Beach Educational Foundation (RBEF) provide funding and support for many of our student programs. We appreciate everyone who helps our students find success in high school and beyond.

PTSA continues to support our mission to advocate, empower, and connect all students, families, and communities. This year, Redondo Shores PTSA will be merging with Redondo Union High School's PTSA to give our students and families access to a broader spectrum of community outlets. We are excited about this change and looking forward to collaborating with our neighbors. Our

students and parents are eager to join in on the upcoming community events. We also appreciate PTSA's funding for student scholarships and instructional materials.

We also want to thank the RBEF for continuing to support our college-going culture. RBEF funds parent education materials and programs, including financial aid and college planning workshops. For the past two years, RBEF has provided teacher coaching for implementing the new California State Standards in math; funding for all sophomores and juniors to take the PSAT at Shores; and transportation to a ropes course and overnight wilderness challenge in Joshua Tree National Park. This year, RBEF will also be funding art and science instructional materials. These opportunities provide our students with the skills and resources necessary to challenge themselves and prepare for success in college and careers.

Please help RBEF continue to make a splash at Shores and throughout the district by donating at rbef.org. Thank you for helping us Raise the Tide!

1000 Del Amo St., Redondo Beach, CA 90277
310/798-8690 • <https://rshs-rbusd-ca.schoolloop.com>

RBUSD Child Development



Theresa Van Dusen
Director

Including All Explorers!

*By Kathy Martens,
Washington CDC Site Supervisor*

The preschool and pre-K classrooms at Washington Child Development Center are often invited throughout the year to assemblies that are sponsored by Redondo Beach Unified School District Parent Teacher Association.



We love drums!



Drum performance at CDC.

Most recently, our little Explorers attended the Japanese taiko, or drum, assembly that teaches diversity. TAIKOPROJECT performs contemporary Japanese-American taiko drumming. It is an art form drawn

from Japanese ancestry but nurtured in America by multigenerational Asian Americans in search of a voice for their dual cultural identity. Through the sharing of music and stories, the assembly offers stories of heritage and culture, and encourages others to have pride in and explore their own cultural backgrounds as well.

The PTA at Washington Elementary strives to encompass the whole child in experiences and events throughout the year that are rich in content and meaning, even for the littlest of Explorers at Washington Child Development Center Preschool.

1401 Inglewood Ave., Redondo Beach, CA 90278
310/798-8683x1312, 1321 • www.rbusd.org



Dr. Anthony Taranto
Director

Blueprint for Workplace Success

At South Bay Adult School (SBAS) we believe that continual learning is essential to fulfilling human potential. To that end, we strive to create a customer centered environment for meaningful, enjoyable and affordable classes that reflect the ever-changing goals and interests in our community. We offer a wide range of education programs for adults within the communities of Redondo Beach, Manhattan

Beach and our surrounding cities. We enjoy and take pride in offering our students quality and relevant classes, as well as a quality learning environment.

This term, we have partnered with the South Bay Workforce Investment Board (SBWIB) Torrance One-Stop to bring a free education and job training course to our campus. This nine week course is committed to helping students develop the job skills, abilities and attitudes essential for participation in today's workplace. The Blueprint for Workplace Success class at South Bay Adult School curriculum was created:

- To achieve improved, more relevant training and employment outcomes for youth.
- To connect what is being taught in the classroom with what is required in the workplace.

Each participant of the program will follow the Blueprint for Workplace Success plan to:

- Self-Discovery
- Managing Time Effectively
- Understanding Workplace Skills for Today's Employee
- Facing Realities of the Job Market
- Learning How to Use Effective Communication
- Gaining Skills and Knowledge for Contacting Employers
- Preparing with Confidence for the Job Interview
- Getting Hired and Learning about Workplace Issues and Paperwork
- Learning How to Manage Money
- Learning How to Keep the Job

Students will have the skills needed to be productive learners and earners in the workplace and they will understand the relationship between what is taught in the classroom and what is required in the workplace.

RBUSD Educational Services



Dr. Annette Alpern
Deputy Superintendent, Educational Services

Welcome, Class of 2029!

Although we are in the midst of winter rains, February is the month when families begin the process of preparing to enroll their youngest children in school for next fall. We believe that all eight of our RBUSD elementary schools are spectacular, and we want to encourage all of our families to be aware of and attend the various kindergarten information events scheduled during this time of year.



Grouping by 10's.

A kindergarten right of passage.

As a Redondo Beach resident, you are guaranteed a space in kindergarten at your home or neighborhood school. At Washington Elementary School, we also have a district Spanish/English Dual-Language Immersion program. To be eligible to participate in the lottery for this program, you must first register your child at his or her home or neighborhood school and then complete and submit the school-of-choice paperwork in March. Throughout this edition of *School News Roll Call*, you will find more detailed information about these events.

The first date to register your child for kindergarten is March 1. We welcome our graduating Class of 2029!

1401 Inglewood Ave., Redondo Beach, CA 90278 • 310/937-1221

Register now for winter term!

SBAS ADULT EDUCATION

Classes for lifelong learning! Redondo & Manhattan Beach Unified School Districts

www.southbayadult.org

www.facebook.com/SouthBayAdultSchool

Adams Middle School (6–8)

2600 Ripley Ave., Redondo Beach, CA 90278 • 310/798-8636 • <http://www.adamsmiddle.org>



Lisa Veal
Principal

Winning Partnerships

At Adams, we strive to provide an environment that will foster not just our students' academic development, but also their social, emotional, and physical development as well.

To this end, we value the great partnerships that we have with the PTA and the Redondo Beach Educational Foundation (RBEF). Their commitment to Adams ensures that our students can receive an educational experience that is second to none.

Parent involvement is a necessary ingredient to student success, regardless of age or grade level. Studies show that students with involved parents tend to like school more, do better in school, and have better social skills.

Our PTA affords many opportunities for the middle school parents to stay active in their children's education, while also providing enriching experiences for their students. Parents are welcomed to participate in school programs and events like Hands-on-Art, the Fall Fitness Festival,



Adams walkers participate in the Skechers Pier-to-Pier Walk in support of RBEF.

program, the Advancement Via Individual Determination (AVID) program, Common Core math coaching through Loyola Marymount University, and the vocal music program.

In turn, our community pledges its support to the RBEF through its annual Donor Drive, and by attending events such as the Pier-to-Pier Friendship Walk. The constant support of the Redondo Beach Educational Foundation greatly enriches the educational program of our students.

We are extremely grateful for the support that these two child advocacy organizations provide for our schools and school district. They make a significant difference in the lives and education of our Adams students. Thank you to the PTA and RBEF for everything they do!

and the Renaissance Faire and Greek Day. We are fortunate to have the support of our PTA, and encourage more parents to become involved and make a difference at their school.

Adams also values its partnership with the RBEF. The Foundation contributes to programs such as the after-school intramural sports

Alta Vista Elementary (K–5)

815 Knob Ave., Redondo Beach, CA 90277 • 310/798-8650 • <http://altavista.rbusd.org>



Susan Wildes
Principal

Pillars of Support

The definition of a school is “an institution for educating children.” That institution comprises the basic brick-and-mortar building, books, materials and technologies used to facilitate children's learning, the students and the staff. But what turn a school building into a learning environment are the people who work to establish supporting relations and who

work tirelessly to ensure that the institution flourishes and fosters student learning. In the Redondo Beach Unified School District, we have two unique partnerships with the Redondo Beach Educational Foundation (RBEF) and the Redondo Beach Parent/Teacher Association (PTA). The dual support that these two groups offer to our schools allows teachers to provide a richer learning environment and offer challenges to students, allowing them to reach their highest potential.

The backing that RBEF and the RBPTA provide reaches each and every school and student in the district. Through RBEF at the elementary level, students receive vocal music instruction and twice-weekly band instruction. Fourth- and fifth-grade students receive weekly STEM (Science, Technology, Engineering and Math) Lab instruction.

Elementary students receive the support of school guidance counseling and college-career readiness. Classroom teachers and teams are provided the financial support for individual classroom grants. RBEF has the ability to provide our students with the people and programs to enrich their education. Through RBPTA, our students receive enrichment experiences. PTAs throughout the district provide funding for supplemental field trips, assemblies, Hands on Art, community events such as school festivals, parent education and family nights, and direct classroom and teacher support.

Volunteers Walk the Talk

In addition to all of the programs that these two groups financially provide to the schools and students, RBEF and RBPTA commit thousands of volunteer hours directly into classrooms and schools. These volunteers work directly with programs such as Hands on Art and Hands on Science, Running Clubs, Battle of the Books and the First Lego League, just to name a few. The value that these programs bring to students is immeasurable and allows schools to offer enrichment programs that would otherwise not be able to be supported with staff alone. RBEF and RBPTA have a direct impact on teacher efficacy and student success. They allow the Redondo Beach Unified School District and Alta Vista Elementary to recognize greatness.

Beryl Heights *Elementary (K-5)*

920 Beryl St., Redondo Beach, CA 90277 • 310/798-8611 • <http://beryl.rbusd.org>



Karen Mohr
Principal

Our Great PTA and RBEF

We are very fortunate to have such a supportive PTA at Beryl Heights Elementary School. We had an amazing fund-raiser called Race to the Finish, and we doubled the amount of money from last year. Students participated in a 30-minute obstacle course event and had a blast sliding down a slide, snaking through the Black Ops course, and riding ponies to the finish line!

Not only do we have extraordinary fund-raisers and lots of activities, but PTA volunteers have recorded over 1,000 volunteer hours at our school. In January, we had a restaurant night at a local diner and a Family Math Night, where families have fun exploring math together.

Our Redondo Beach Education Foundation (RBEF) has had such a positive impact on Beryl. Thanks to the generosity of our donors, RBEF has been able to fund many programs and projects at Beryl Heights. They sponsor college-going culture programs, including a college visit field trip for fourth-graders and parent education events and materials. The organization sponsors the Music Center Artists in Residency Program to provide first- and second-graders with enriching performing arts experiences led

by professional artists. RBEF funds credentialed science teachers to provide weekly lab experiences for fourth- and fifth-graders and a credentialed vocal music teacher to provide high-quality, vocal music education for third- and fourth-graders. They also fund a credentialed instrumental music teacher to provide high-quality, music education for fifth-grade band students.

Please donate to the education foundation this year. There will be incentives and a special event with the principal if we meet our school goal. (More details to follow.) As always, thank you very much for your support.



PTA sponsored Race to the Finish event.

Birney *Elementary (K-5)*

1600 Green Ln., Redondo Beach, CA 90278 • 310/798-8626 • <http://birney.rbusd.org>



Mira Baskaron
Principal

Enriching Lives

What would we do without the wonderful organizations that fund so many of our enrichment programs here on the Birney campus?

The PTA continues to provide our students with enriching opportunities in art and science by providing such parent-led programs as Hands-on-Art and Hands-on-Science. In addition, the PTA also supports

the following programs that would not otherwise be possible without their contributions: field trips, buses for field trips, buses for Science Camp, family nights, classroom enrichment grants for teachers, the "Walk Through the American Revolution" program, professional development for teachers, and so much more.

They are always looking for new ways to enrich our students' lives. These opportunities come about through much hard work.

If you have not done so already, please become a member of the PTA to help support our Birney students.

The RBEF is another wonderful organization that is hard at work providing students with many enrichment opportunities. Their continued support has allowed our third-, fourth- and fifth-grade students to participate in a weekly music program. Thanks to them we also have an available counselor on campus, and even physical education teachers.

The teachers who provide music to our students are giving the children an opportunity that might not exist but for the RBEF. And the support of our physical education teachers also allows the other teachers to have continued professional development opportunities while their own students are with them.

If you have not already done so, please contribute to this wonderful organization so that they can continue to provide these opportunities to our Birney students. Birney is very fortunate to have these two groups working hard on its behalf.

They provide so many wonderful opportunities. Thank you PTA and RBEF!



Birney students enjoying their music lesson.

Jefferson *Elementary (K-6)*

600 Harkness Ln., Redondo Beach, CA 90278 • 310/798-8631 • <http://jefferson.rbusd.org>



Jeff Winckler
Principal

Two Partners in Success

The PTA is responsible for a number of programs and events such as Movie Night, the Spring Carnival, assemblies and field trips. These programs and events provide unique opportunities that enrich the lives of students and enhance our school community. PTA volunteers also contribute countless hours of school service in classrooms and across our campus.

The RBEF also plays a part in helping support student success across elementary schools throughout RBUSD. RBEF assists our schools by contributing to such programs as fourth- and fifth-grade lab science, the instrumental band and the artist residency program for first- and second-graders. In turn, our school community consistently supports RBEF through its annual donor drive by attending RBEF events such as the Pier to Pier Friendship Walk.



PTA and RBEF in Partnership at Jefferson.

The combined work of the PTA and RBEF on behalf of our school makes a significant difference in the lives of Jefferson students every day. Their contributions are strong examples of successful partnerships that make our school an even better place to be. As a school, we are grateful to have the support of each organization that plays a strong role at Jefferson.

Lincoln *Elementary (K-5)*

2223 Plant Ave., Redondo Beach, CA 90278 • 310/798-8646 • <http://lincoln.rbusd.org>



Jane Tasker
Principal

A Teamwork Approach

Bert and Ernie, Tom and Jerry, peanut butter and jelly, Redondo Beach Educational Foundation (RBEF) and PTA. These terrific duos all have one thing in common: they work together to make things great! Lincoln Elementary School's partnerships with PTA and RBEF are based on a common goal of providing outstanding educational experiences for our students. We are grateful

to have support from both organizations and recognize that their contributions are different yet equally important.

The Lincoln PTA is responsible for programs that every child benefits from, including Hands on Art, Hands on Cooking, assemblies, and class field trips. The Lincoln PTA is also involved in building a community spirit through the many family events they organize. Mystery Movie Night, Family Rock 'n' Skate Night, and the Nerf Fun Event are just a few of the annual traditions made possible at low or no cost to Lincoln students and their families. PTA volunteers can be seen providing support and service in classrooms and across our campus on a regular basis—and their involvement is critical!

RBEF provides support to all schools in the Redondo Beach Unified School District. Thanks to the generosity of our donors, RBEF has been able to fund the following programs and projects that specifically impact Lincoln Elementary School: college-going culture programs, including a college visit field trip for fourth-graders; a credentialed science teacher to provide weekly lab

experiences for fourth- and fifth-graders; a Music Center Artists in Residency Program, which provides first- and second-graders with enriching performing arts experiences led by professional artists; a credentialed vocal music teacher to provide high-quality vocal music education for third- and fourth-graders; and a credentialed instrumental music teacher to provide high-quality music education for fifth-grade band students.

By supporting both organizations, you can help create experiences that with last a lifetime for Lincoln's students.



Lincoln students, parents and staff support RBEF at Skechers Walk.

Madison *Elementary (K-5)*

2200 MacKay Ln., Redondo Beach, CA 90278 • 310/798-8623 • <http://madison.rbusd.org>



Drew Gamet
Principal

Thank You for Your Support!

If you have participated in our Halloween Carnival, seen the results of fascinating science experiments, or heard wonderful tales of great assemblies from your child, you have are the beneficiary of the relentless work and dedication of the Madison Elementary School PTA. Madison PTA, under the leadership of PTA President Kari Chatterji, support many activities. On

any given day, you can find PTA busy supporting great education. Those of you reading this article may be some of those dedicated volunteers. If you are not, I'll bet you are wondering how to get involved.

You can find the Madison PTA page under the "Parent"

menu at <http://madison.rbusd.org/>. There you will see a list of activities that Madison PTA supports. For every activity, there is always a need for volunteer support. The skills needed are quite varied: everything from grilling hamburgers to Web design. Time commitments vary as well, with small projects that require no more than an hour commitment to reoccurring programs that continue over the course of the school year. You can find information to sign up under the "Help Wanted" tab.

We also have the new Watch Dads Of Great Students (DOGS) program for dads looking for opportunities to volunteer at school. You can also sign up for this program on the Madison Web site.

With your support, these great programs will continue.

Parras *Middle School (6-8)*

200 N. Lucia Ave., Redondo Beach, CA 90277 • 310/798-8616 • <http://www.parrasmiddle.org>



Dr. Lars Nygren
Principal

Partners in Support

Parras Middle School has tremendous support from our parent community through our PTSA organization. We are fortunate to have a large number of parents who volunteer their time and effort to ensure that our students have a wonderful experience while attending Parras Middle School. Their support for our school comes in many different ways.

Our registration each year is coordinated and run entirely by the PTSA. We have over 1,100 students who go through our registration in just three days. Our parents also support our students by volunteering their time to help coordinate special events at our school, such as Renaissance Faire, Greek Days and the end-of-the-year promotion dance for our eighth-grade students. Our PTSA also organizes four visual and performing-arts assemblies throughout the year for our students to experience. To help our parent community, the PTSA holds different informational nights on topics that are relevant to having a child in middle school. PTSA also supports our teachers by volunteering to support in the classrooms when needed and hosting teacher-appreciation days.

Investment in Students

In addition to PTSA's assistance, Parras Middle School has benefited greatly from the Redondo Beach Education Foundation's work to raise money to help our school. As a result of their fund-raising efforts, Parras has been able to provide our students an extensive after-school intermural program. Students are able to participate in sports such as softball, soccer, flag football, basketball

and many more! The foundation has also supported our science program by investing money in our science lab. With the RBEF's financial help, we were able to purchase digital microscopes, models and lab equipment for our students to use. A great benefit to our students and teachers provided by RBEF is the financial support they have given to RBUSD for math coaches. Our math coaches work closely with teachers to help them teach the Common Core State Standards in math at the highest levels. RBEF has also funded students' connectedness to our school by supporting the WEB (Where Everyone Belongs) Program. This program connects eighth-grade students with sixth-graders. WEB helps sixth-grade students make the transition from elementary school to middle school.

The PTSA's and RBEF's efforts have helped Parras Middle School to continue to offer wonderful experiences and a quality education for our students. Thank you, PTSA and RBEF!



WEB Leaders build comradery with new sixth grade students.

Redondo Union *High School*

631 Vincent Park, Redondo Beach, CA 90277 • 310/798-8665 • <http://www.redoundion.org>



Dr. Nicole Wesley
Principal

Common Denominator: You!

By Anthony Bridi, Assistant Principal

Have you ever wondered what makes our Sea Hawks thrive? Is it personal motivation, outstanding course offerings and teachers, amazing facilities, or the numerous extracurricular activities? Of course, it is all of the above, but the common denominator is you. That's right—you!

Parents, your support of RBEF

(Redondo Beach Education Foundation) and our RUHS PTSA (Parent Teacher Student Association) has increased opportunities and experiences for our students. This year, RBEF awarded staff members innovative teacher grants, which have enhanced learning experiences for students in a variety of classes and programs such as our Robotics Team, performing-arts programs and AVID (Advancement via Individual Determination) program, to name a few. RBEF has also supported our college-going culture by providing funding for PSAT exams for all 10th- and 11th-grade students, college field trips and parent workshops.

In addition, many of you are PTSA members—1,433 memberships and growing! Thanks to you, PTSA continues to provide student experiences such as Academic Letter Night, Sacramento Safari, academic field trips, scholarships and community events such as the RUHS Classic Car Show.



RUHS AP Environmental Science (APES) students attend the Ballona Wetlands. Student learned the impact of urbanization on wetlands and learned a variety of water testing methods. Field trip sponsored by the RUHS PTSA.

PTSA membership has its privileges, too! Being a member allows you to stay in the know by receiving the "PTSA E-NEWS." Weekly updates provide the ability to stay on pace with RU events and stay informed of all of the exciting opportunities offered for students and parents. Your membership and volunteer efforts are appreciated throughout the school year.

Tulita *Elementary (K-5)*

1520 Prospect Ave., Redondo Beach, CA 90277 • 310/798-8628 • <http://tulita.rbusd.org>



Dr. Tanaz Farzad
Principal

Perseverance and Growth Mindset

According to researchers, perseverance may be the most important characteristic for our children's future success. Although persistence is often an inherited trait, there is evidence that children can be taught to be more persistent. How can we, as parents and educators, help our children learn to successfully persevere?

First, we need to recognize and point out when our children do persevere. Second, help your child understand that practice makes perfect. Encourage the effort and practice that your child exhibits more than the end result. Third, offer emotional support and listen to their frustrations. A good cry might be all your child needs to pick up and keep on moving forward. Finally, model perseverance yourself. Narrate your own persistence aloud for your child to see how challenges are hard for everyone and that taking a break and thinking about other ways to solve the problem can lead to a breakthrough. Share with them your own struggles growing up and how you overcame them.

At Tulita Elementary School, we continue to foster the growth mindset, not only in our students but our entire school community. It is important that we harness the power of yet and remember that effort brings success. Carol Dweck, author of *Mindset: The New Psychology of Success*, tells us



2nd Grade Tulita student perseveres in solving a tough math problem.

that the fixed mindset will limit achievements and lead to inferior learning strategies. The growth mindset lets our children use and develop their minds to their full potential. We define ourselves, so, with a growth mindset, the possibilities are endless.

Washington Elementary (K-5)

1100 Lilienthal Ln., Redondo Beach, CA 90278 • 310/798-8641 • <http://washington.rbusd.org>



Kristen Holm
Principal

Washington Toots Its Horn

The Washington Explorers would like to thank the Washington PTA, and the Redondo Beach Education Foundation (RBEF), for providing the kind of outstanding school-wide educational opportunities that would not otherwise exist.

Under the leadership of Lindsay Smith, the group's president, our PTA is at a record high of 779 members strong! The PTA provides enrichment funds for educational field trips, cultural arts assemblies, and Hands-on-Art and STEM classes for the kindergarten through third-grade students.

The goal of the STEM classes is to promote and encourage children to learn about science, technology, engineering, and math through hands-on lessons in biology, ecology, applied mathematics, and physics. It is also a great way to get the fathers back into the classrooms!

We are so grateful to the many parent volunteers who make up our amazing PTA. They provide many hours of school service in the classrooms and across the campus.

The RBEF also plays a major role in increasing student achievement and engagement by providing band classes. Just ask Harper Lee Jones and Ikuya Okada. "I really love playing the trumpet," said Ikuya. "If it wasn't for band I

might never have learned to play the trumpet. My favorite song is *Merrily We Roll Along*."

Harper added, "It's about the freedom of just being able to play. Let's say you are at a holiday gathering and you wanted to play *Jingle Bells*. You can just take out your music book and trumpet and start playing. It's really cool. My favorite part of band is the teachers. When I grow up I am going to play the trumpet in a jazz band."

The Washington School Community would like to say "thank you" to the RBEF and PTA for all that they do for our students. We couldn't do it without your help! Go, Explorers!



Harper Lee Jones and Ikuya Okada are all smiles when they get to play their trumpets.

Contest!

This picture is somewhere in this publication. When you find it, email the **page number** to:



Kay@schoolnewsrollcall.com
(Please put RB in the subject line)

Your entry must be received by **February 20, 2016**.

From the correct entries, we will draw a winner to receive a \$20 gift certificate redeemable at Barnes and Noble.

The contest winners in the December issue are:
Tristan Lu,
Gisella & Logan Guerreiro

UCLA Extension

Life-Long Learning for Educators

UCLA Extension Education Programs
Get there from here.

Learn more about the many programs we offer by visiting us at uclaextension.edu/teachers or call (310) 825-4191.



17560-15



Rolling Hills Montessori School
 in a beautiful rural setting, offering 3 programs:
Toddler, Pre-Primary and Transition (18 months - 7 years)

- Full day and half day
- Chinese/Spanish and Music inclusive
- 10 Extra curricular classes available
- Field Trips
- Community atmosphere
- Fully credentialed staff

Spaces are limited.
 For more info please call: (310) 377-5722

Rolling Hills Montessori
 26825 Rolling Hills Road
 Rolling Hills Estates, CA 90274
 www.rollinghillsmontessori.com

Hitting the Right Notes

Using Music to Teach



Saskia Garel

As a parent, if you're like me, you obsess about your child being ahead of the curve when it comes to learning everything from reading and writing to potty training and manners. You also want to ensure that any obstacle they face will be easily overcome with the skills you provide them with. In my experience, music has been my greatest collaborator. Not only in the "play classical

music for my baby to make him a genius" kind of way, but actually using music to teach any type of information or skill. With my son, I would put on a one-woman show at mealtime, playtime, bedtime and basically every time in between. Yes, it was a bit or a lot excessive, but I just didn't want him to struggle or be bored and uninspired. I wanted to stimulate his little brain and expose him to everything.

What I began to notice was that he had an unbelievable ability to learn and retain information because of the songs I entertained him with. By utilizing the combination of lyrics, rhythm and melody, music can aid in the learning experience. Tristan could spell his name as early as he could talk because I taught him the letters in his name to the tune of Twinkle Twinkle Little Star. At Tristan's daycare, I remember other parents marveling over his ability to recite, not only our home phone number but our cell numbers and his address—in case he ever got lost or separated from us in a crowd. At 6, he was one of the few people in his Scouts Troop that knew the entire pledge by heart by the second meeting, all because I put a melody to it...and to this day he remembers it verbatim, without even having to sing it.

It has been the same with my daughter, Mixie. Since I witnessed the power of music and the fantastic effects it had on my son's learning, I added to our repertoire. At two years old she can read phonetically as I never sang the ABC song to her in the traditional way. I sang it to her phonetically so when she sees a letter, instead of saying its name, she says its sound. If I show her a three-letter word like CAT, she basically sounds it out right away instead of having to discern that the letter C makes the CUH sound. I went as far as to make up songs that highlight sight words, letter blending, prefixes and suffixes. Even as they grow older the songs that I created for them as babies remain ingrained in their little heads. They never suspected that they were learning.



So, try music the next time you want to teach your child anything at all. You can use traditional melodies with your own words or make up your own tunes altogether. I promise you, you don't have to have a beautiful singing voice or impeccable rhythm...you just have to be enthusiastic and fun. A little tip: record yourself so you don't forget the wonderful creations you dream up! I did just that and put together a CD of 24 songs that I sing to my kids all the time. It's called *All in a Day's Play* and is available on iTunes and CD Baby.

BTW, Tristan is now 8 and hasn't conquered eating over his plate. I'm convinced there is just no song for that unfortunately, unless you count "Eat the Crumbs Right off the Floor" sung to the tune of Head and Shoulders Knees and Toes!!

Saskia Garel is a Mom/Singer/Songwriter/Author/Artist, Please visit www.saskiagarel.net

Peaceland Music & Repair
GUITAR LESSONS
 Guitar, Piano, Voice, Bass, Drums
 Also: Ukulele, Banjo, Mandolin
James Musser
 Nominated Best LA Band '96
 Best Guitar '97 LA Music Awards
All Ages, Levels & Styles
 Days, Evening & Weekends
(310) 650-4201
 www.peacelandmusic.com
 peaceland@peacelandmusic.com
 23706 Crenshaw #105A&B, Torrance, CA
 across from Hof's Hut
 Visit us on
 Myspace.com/PeacelandMusic
 YouTube.com/PeacelandMusic

Proud Sponsor of
 Your School for Over 20 Years!
South Bay
 Driving School
\$20 off
 One coupon per student
 Online and Classroom Available
(310) 791-1111
 3614 Pacific Coast Hwy.,
 Torrance, CA 90505
 Southbaydriving.com

Lucy's Book Review

Fabulous!

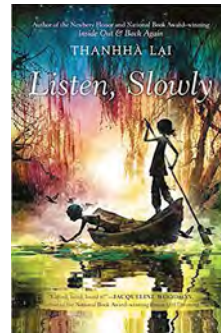


Lucy Davis

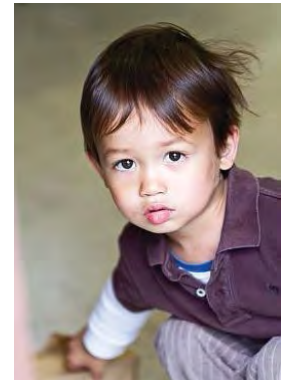
Listen, Slowly
 Author: Thanhha Lai
 Summer has begun and Mai is looking forward to a beach-filled one. That is, before her parents ship her off to Vietnam with her grandmother, who hopes to find her husband that has been missing since the Vietnam War. While in her home country, Mai discovers that Vietnam isn't just what she's learned from documentaries, but a place full of people and excitement. When she befriends Ut, it's a bonus to her trip. Mai and Ut develop a friendship that keeps the book interesting, as they conspire to help Mai's grandmother find her husband. I chose this book so that I could learn more about where my mom and grandparents came from, and I really enjoyed it.

I give this book four bookworms out of five because of its humor, love, and thoughtfulness.

Lucy Davis is a 4th grade student at Beryl Elementary in Redondo Beach. Besides reading, she enjoys riding her bike, theatre, and playing guitar. Lucy will rate the books 1 to 5 bookworms with 5 being the best.



Within the child lies the fate of the future.
 -Maria Montessori



Serving children ages
 18 mo. – 6 yrs.

- Extended day care
- Potty training support
- Enrichment curriculum

Peninsula Montessori School
 Redondo Beach

(310) 540-9742

907 Knob Hill Ave.

www.peninsulamontessori.com

USYVL Spring 2016
Hermosa Beach Youth Volleyball
 volleyball starts here!

at South Park

Starts Mon, Apr 11
 Mon. 6:00 - 7:00 PM
 Wed. 6:00 - 7:00 PM

Register online at
usyvl.org
 Plan ahead and save.

Early: \$135 due by 12/1/15
 Reg: \$155 until 3/1/16
 Late: \$185 until 4/1/16
 Multiple child family discount and financial aid available to those who qualify.

Sign up now for Spring!
 *8 weeks of instruction in a safe, fun and encouraging environment.

*4 age divisions of boys and girls, ages 7-15

*Registration price includes a volleyball, T-shirt and participation award.

www.Facebook.com/USYVL
www.Twitter.com/USYVL

UNITED STATES YOUTH VOLLEYBALL LEAGUE

South Bay Hands On Art

Happy New Year!

By Co-Chairs Gina Clancy & Erika Snow Robinson

We hope you all had a fantastic holiday season. SBHOA is going to be off to a great start with our first 2016 project by artist Marianne Coble who was inspired by the work of



Basquiat. It promises to be a very exciting project full of color and many different medias. We are also looking forward to seeing you all at our Annual fundraiser which will be held on Saturday, February 27th at 6:30 to 10:30 pm at the St. James Catholic School O'Gorman center. Tickets will be available soon so keep an eye out! There will be dinner and of course ART! Tell all your friends and family or make it a date night. We can't wait to get our art SWAG on for 2016!

2110-B Artesia Blvd., Box 805, Redondo Beach, CA 90277
www.southbayhandsonart.com

Catch up, get ahead, or try something new... all while earning class credit.

Always wanted to try a guitar class? Need to catch up in biology? Want advanced credit in English? We can help!

- Tutoring
- Art & Music
- Yoga
- Mentoring
- Test Prep
- Classes for Credit
- Homework Cafe®

Fusion South Bay
 310.376.5139
FusionSouthBay.com

fusion
 A REVOLUTIONARY WAY TO SCHOOL

AFTERSCHOOL
 Open up their minds to the world before it is too late!

SAVOIR FAIRE
 LANGUAGE ♦ INSTITUTE

Classes available for adults & children

 FRENCH	 MANDARIN	 ITALIAN	 SPANISH
 GERMAN	 JAPANESE	 ENGLISH	 ARABIC

Redondo Beach Students Special
 Offer Ends 2/24/2016
 *Not valid for preschool
 minimum 8 weeks registration
www.sfli-ca.com

Call Now!
310.379.1086

\$100 OFF GROUP CLASS WITH THIS AD*

Redondo Beach Educational Foundation



Ted Craddock
 President

Partner With RBEF

Each year, RBEF engages in year-round fundraising to provide much needed, high-quality, educational programs that would not exist with public funding alone. We are so proud to be the only support organization capable of providing additional faculty, staff, and programs district-wide for Redondo Beach Unified Schools and we are pleased that we continue to make a positive impact by funding multiple programs at every single school in the district.

In order to accomplish this, we garner financial support from numerous sources. Less than one-fourth of our fundraising income comes from Redondo Beach parents, staff and families in our annual giving campaign which took place in the fall. During our campaign this year, we had 340 total people donate, raising \$90,000 towards our \$350,000 goal. It is not too late to give. At any time, you can go to www.rbef.org to donate or drop a check off to your school's front office. The remaining seventy-five percent of funds we raise come from our business partners, charitable organizations, and events.

Whether you have a small business or a large corporation we would encourage you to visit our website at www.rbef.org to view our Business Partners program. If you are interested please feel free to contact our board member, Mr. David Coe at david@rbef.org or 310.904.2004.



Redondo Beach Council PTA



Raymur Sweeney
 President

Helping the Community

The PTA is the largest volunteer advocacy association working exclusively on behalf of children. For more than 100 years, our organization has promoted the education, health, and safety of our children, youth, and families.

The PTA is invested in the whole child, and constantly advocates on their behalf. California State PTA organizations reach millions of parents and families through memberships, coalitions, and partnerships, and have a long history of landmark advocacy.

We are so fortunate to have strong PTAs at each of our Redondo Beach schools. With over 7,000 members, our local PTA not only works at the individual school sites through volunteer activity, but it is also a part of the Redondo Beach Council PTA; an organization that works to ensure that we are all collaborating on various ways to help our school and community.

The PTA has a place for everyone, and at any time. Thank you for helping us to work with the RBUSD and guarantee the best education possible for our students.

1401 Inglewood Ave., Redondo Beach, CA 90278
www.rbused.org

ozobot[®]

My tiny tinker bot

The best way to start
learning STEM & Coding

“...very cool
all the tech that
fits in something
so small.”

“...strikingly
cute! Love all
the lights!”

“...so
creative
& fun.”



Featured on *Today Show*, *Family Fun*, *Techcrunch*, *Mashable*, *New York Times*, *BBC*, *CNN*, *FOX*, *Forbes*.

It's Your Move

www.ozobot.com



Start small.

Choosing the right vehicle can determine how far you'll go. Switch to ScholarShare for your little one's college savings and take advantage of tax-deferred saving opportunity, compound interest potential and just \$25 to start. Get a better savings vehicle. You can do this.



SCHOLARSHARE

CALIFORNIA'S 529 COLLEGE SAVINGS PLAN SM

scholarshare.com | 800.544.5248



Consider the investment objectives, risks, charges and expenses before investing in the ScholarShare College Savings Plan. Visit ScholarShare.com for a Plan Disclosure Booklet containing this and other information. Read it carefully. Investments in the Plan are neither insured nor guaranteed, and there is a risk of investment loss. TIAA-CREF Tuition Financing, Inc., plan manager. TIAA-CREF Individual & Institutional Services, LLC, member FINRA, distributor and underwriter for ScholarShare. The tax information contained herein is not intended to be used, and cannot be used, by any taxpayer for the purpose of avoiding tax penalties. Taxpayers should seek advice from an independent tax advisor based on their own particular circumstances. Non-qualified withdrawals may be subject to federal and state taxes and the additional federal 10% tax. Non-qualified withdrawals may also be subject to an additional 2.5% California tax on earnings. Before investing in a 529 plan, consider whether the state where you or your Beneficiary resides has a 529 plan that offers favorable state tax benefits that are available if you invest in that state's 529 plan. C28481